

Cool, very wet in the South and East

January 2026 began cold and mostly dry with spells of crisp winter sunshine and widespread frost at night. High pressure to the west steered a cold Arctic airmass over Ireland in a northerly airflow. This brought occasional wintry showers, particularly across Northern and Northwestern areas where some snowfall accumulated at times. High pressure pulled away to the north at the end of the first week allowing Atlantic low pressure to dominate for the rest of the month. The second week saw frequent bands of rain and showers moving in from the west while it became somewhat milder. During the second half of January, a strong southerly displaced North Atlantic jet stream directed a succession of low pressure systems toward the country from the southwest. At the same time, a cold blocking high pressure over northern and eastern Europe caused these systems to slow or stall to the southwest of Ireland and meander northwards. This pattern resulted in repeated frontal rainbands moving up from the south, giving prolonged spells of heavy rain, concentrated over the South and East of the country. The cumulative effect of the prolonged wet spell for the South and East caused significant flooding in places. A notable event during this period was Storm Chandra, named by the UK Met Office, which rapidly deepened to the south of Ireland on Monday 26th. As it tracked north late on the 26th into Tuesday 27th, it brought strong winds and widespread heavy rainfall. The month finished with further bands of rain or showers, mainly affecting the South and East.

Rainfall: Above average in most places, wettest in the South and East

The majority of monthly rainfall totals were above their 1991-2020 Long-Term Average (LTA). Percentage of monthly rainfall values ranged from 87% (the month's lowest monthly rainfall total of 90.5 mm) at Shannon Airport, Co Clare to 230% (the month's highest monthly rainfall total of 232.7 mm) at Johnstown Castle, Co Wexford (*its wettest January since 1996*). The month's wettest day was also recorded at Johnstown Castle, Co Wexford with 37.3 mm on Friday 30th (*its highest daily fall for January since 1979*). The number of rain days⁰ ranged from 22 days at Casement Aerodrome, Co Dublin to 30 days at both Newport, Co Mayo and Valentia Observatory, Co Kerry. The number of wet days¹ ranged from 16 days at both Athenry, Co Galway and Mount Dillon, Co Roscommon to 27 days at Valentia Observatory, Co Kerry. The number of very wet days³ ranged from 1 day at Shannon Airport, Co Clare to 9 days at both Johnstown Castle, Co Wexford and Valentia Observatory, Co Kerry. It was the wettest January since 1948 and 2nd wettest on record at both Phoenix Park, Co Dublin with 141 mm (225% of its LTA) and Dublin Airport, Co Dublin with 137.7 mm (223% of its LTA). It was the wettest January since 1995 at Casement Aerodrome, Co Dublin with 114.5 mm (176% of its LTA). Oak Park, Co Carlow has its wettest January since 2014 with 142.3 mm (177% of its LTA) and both Cork Airport with 200.5 mm (153% of its LTA) and Moore Park, Co Cork with 143.7 mm (131% of its LTA) had their wettest January since 2016.

Temperature: Below average everywhere

All mean air temperatures across the country were below their LTA for the month. Deviations from mean air temperature ranged from -1.0 °C at Moore Park, Co Cork and Valentia Observatory, Co Kerry (4.6 °C, 6.5 °C mean temperatures respectively) to -0.2 °C at Markree, Co Sligo (4.6 °C mean temperature). Mean temperatures for the month ranged from 3.9 °C (0.4 °C below its LTA) at Knock Airport, Co Mayo to 6.9 °C (0.8 °C below its LTA) at Sherkin Island, Co Cork. The month's highest temperature was reported at Phoenix Park, Co Dublin on Sunday 11th with a temperature of 13.6 °C. The month's lowest air minimum was recorded on Sunday 4th at Athenry, Co Galway with -5.3 °C while the lowest grass minimum was -10.2 °C reported at Casement Aerodrome, Co Dublin on Monday 5th. All stations reported ground frost during the month. The number of days with ground frost ranged from 9 days at Mace Head, Co Galway to 23 days at Markree, Co Sligo. More than half of stations reported air frost. The number of days with air frost ranged from zero days at a few stations to 13 days at Moore Park, Co Cork.

Sunshine: Generally above average, sunniest in the South

All available sunshine totals were above their LTA, with the first half of January much sunnier than the second half. Percentage of monthly sunshine values ranged from 112% (58.9 hours) at Shannon Airport, Co Clare to 119% (64.0 hours) at Casement Aerodrome, Co Dublin. Monthly sunshine totals ranged from 47.8 hours (No LTA comparison*) at Malin Head, Co Donegal to 75.0 hours (No LTA comparison*) at Cork Airport, Co Cork. The highest number of daily sunshine hours recorded this month was 7.2 hours at Johnstown Castle, Co Wexford on Monday 5th. The number of dull days² ranged from 8 days at Valentia Observatory, Co Kerry to 14 days at both Malin Head, Co Donegal and Casement Aerodrome, Co Dublin.

Wind: storm force winds reported during storm Chandra at one station

Monthly mean wind speeds ranged from 5.3 knots (9.8 km/h) at Moore Park, Co Cork to 18.9 knots (35.0 km/h) at Malin Head, Co Donegal. Gales were reported on fourteen days. Strong gales reported on Sunday 25th at Malin Head, Co Donegal and on Tuesday 27th at Malin Head, Co Donegal and Mace Head, Co Galway during storm Chandra. Storm force winds were reported on Tuesday 27th at Malin Head, Co Donegal during storm Chandra. The number of days with gales ranged from zero days at most stations to 13 days at Malin Head, Co Donegal. The number of days with up to strong gales ranged from zero at most stations to 2 days at Malin Head, Co Donegal. Both the month's highest gust and 10-minute mean wind speeds were reported at Malin Head, Co Donegal on Tuesday 27th during storm Chandra. The highest gust was 70 knots (130 km/h) while the month's highest 10-minute mean wind speed was 56 knots (104 km/h).

EXTREME VALUES AT SYNOPTIC STATIONS

Rainfall

Highest monthly total: 232.7 mm at Johnstown Castle, Co Wexford (230% of its LTA) (*its wettest January since 1996*)
 Lowest monthly total: 90.5 mm at Shannon Airport, Co Clare (87% of its LTA)
 Highest daily rainfall: 37.3 mm at Johnstown Castle, Co Wexford (37% of its monthly LTA) on Fri 30th (*its highest daily fall for January since 1979*)

Temperature

Highest mean monthly temperature: 6.9°C at Sherkin Island, Co Cork (0.8°C below its LTA)
 Lowest mean monthly temperature: 3.9°C at Knock Airport, Co Mayo (0.4°C below its LTA)
 Highest air temperature: 13.6°C at Phoenix Park, Co Dublin (7.5°C above its LTA) on Sun 11th
 Lowest air temperature: -5.3 °C at Athenry, Co Galway (8.4°C below its LTA) on Sun 4th
 Lowest grass minimum: -10.2°C at Casement Aerodrome, Co Dublin on Mon 5th

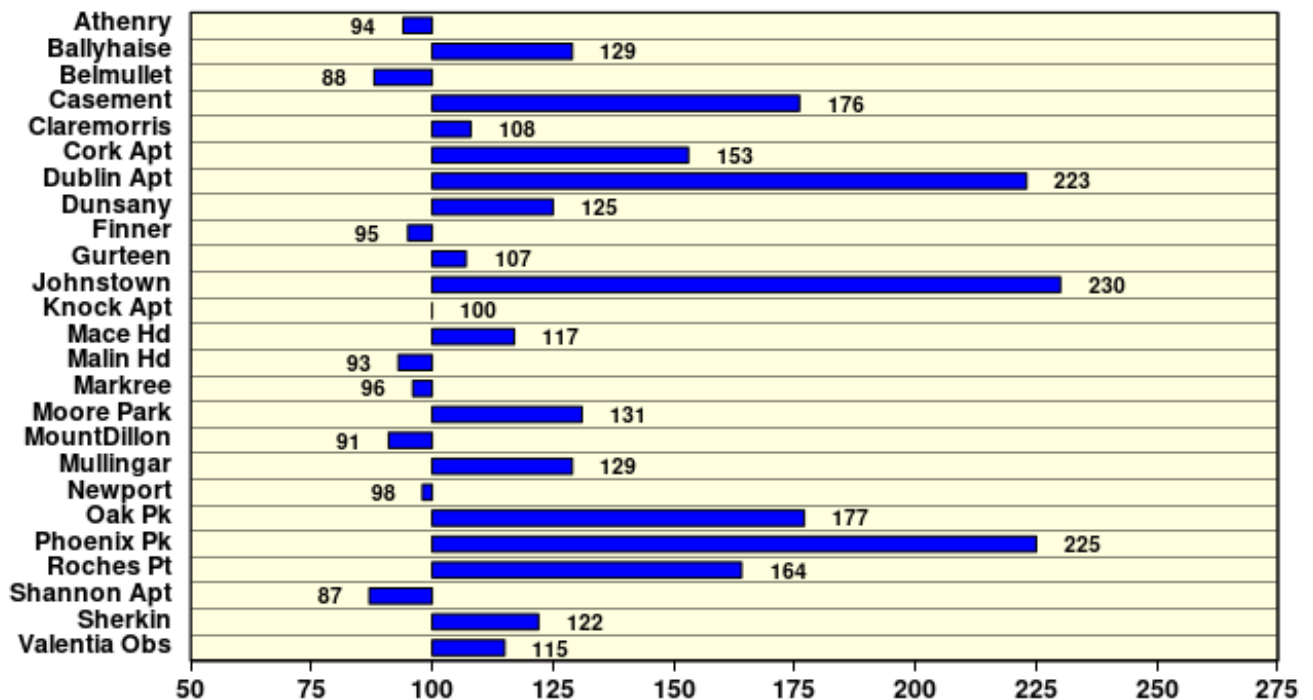
Sunshine

Highest monthly total: 75.0 hours (daily mean 2.24 hrs/day) at Cork Airport, Co Cork
 Lowest monthly total: 47.8 hours (daily mean 3.75 hrs/day) at Malin Head, Co Donegal
 Highest daily sunshine: 7.2 hours at Johnstown Castle, Co Wexford on Mon 5th

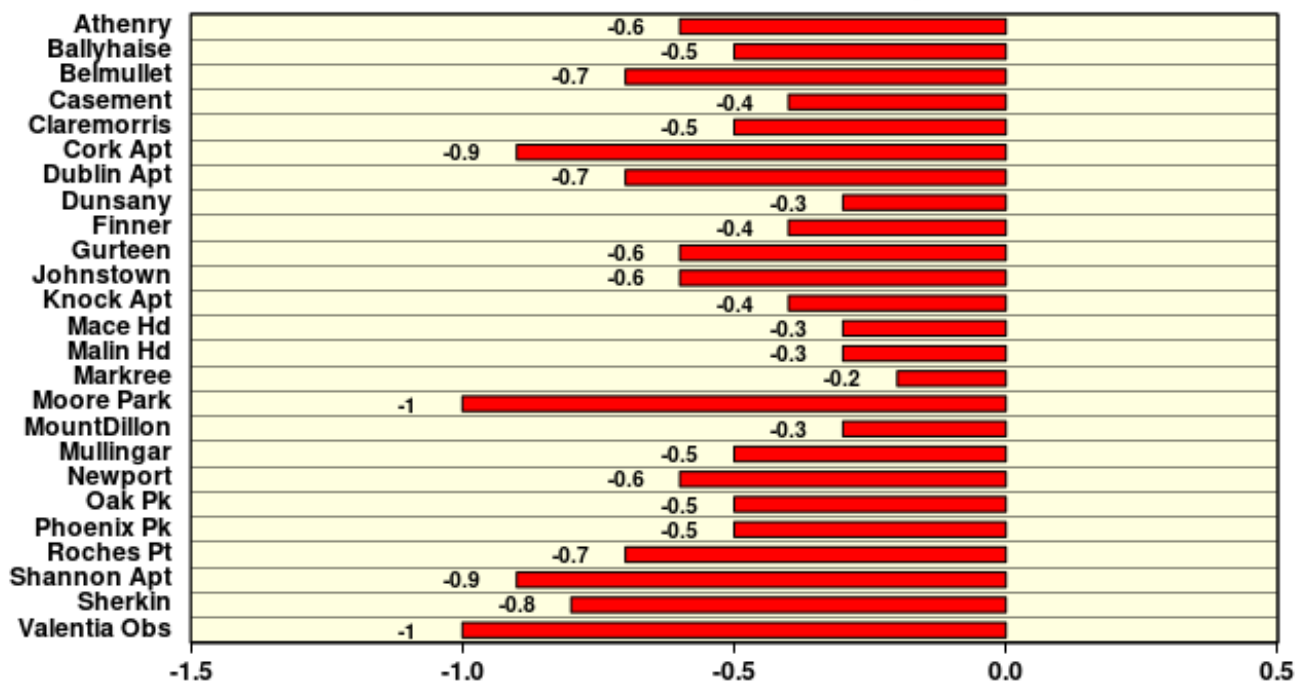
January 2026

Based on Data from 1- 31 January 2026 on whole month basis

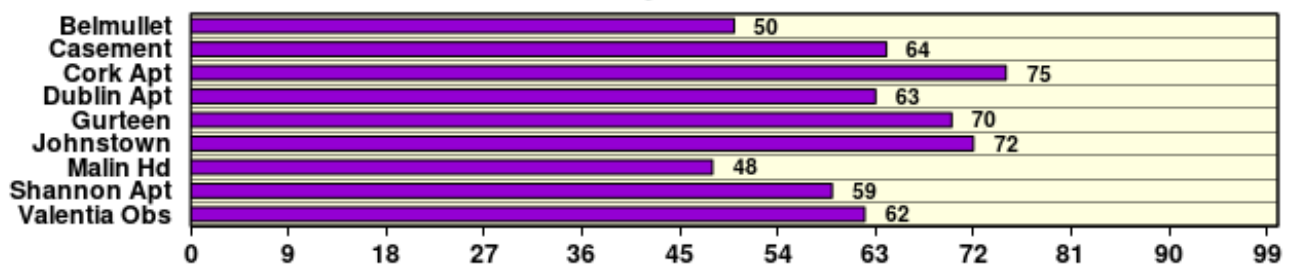
Rainfall (% of average for period 1991-2020) on whole month basis



Temperature (°C)(difference from average for period 1991-2020)



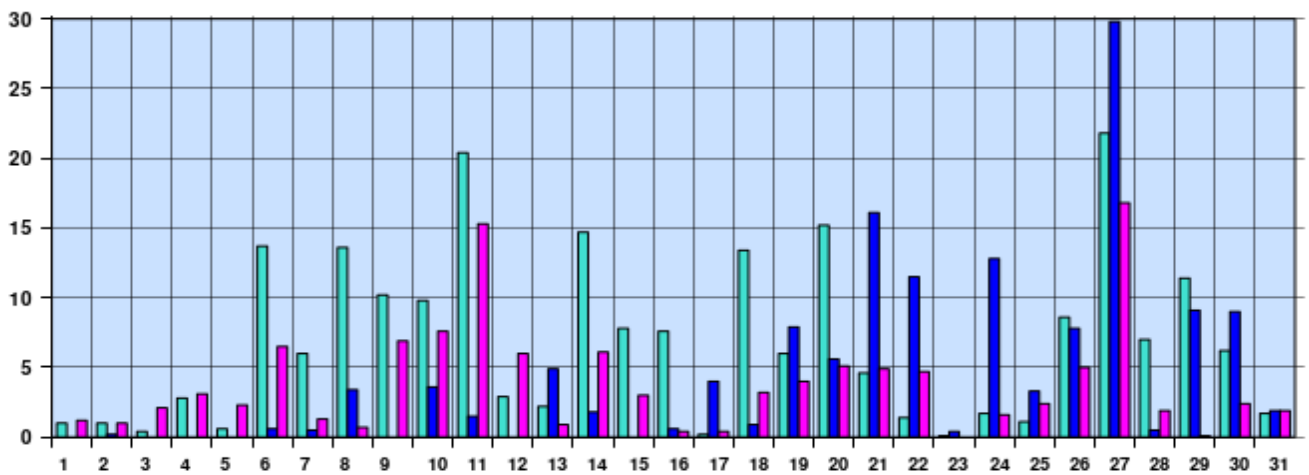
Sunshine (Number of monthly sunshine hours)



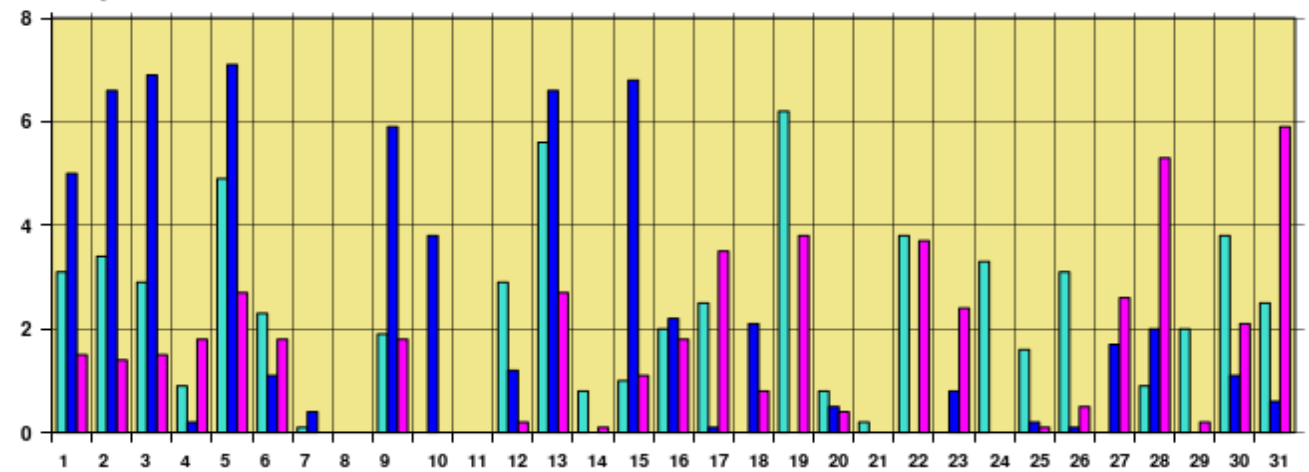
January 2026 Daily Values at Selected Synoptic Stations

Based on data from 1- 31 January 2026 on a pro rata basis

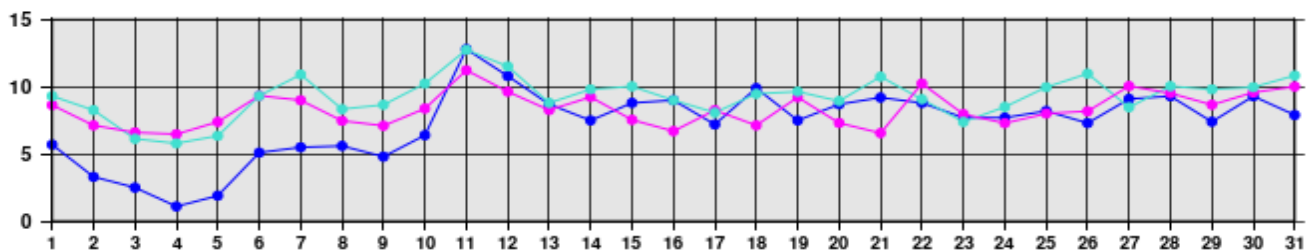
Daily 00-24h rainfall values (mm)



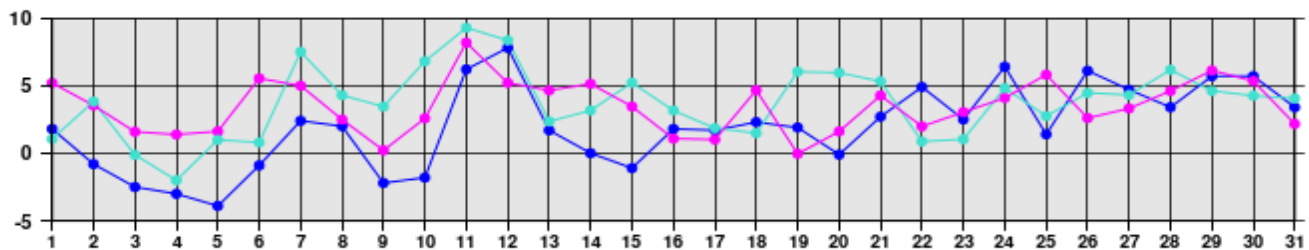
Daily sunshine values (hours)



Daily 00-24h maximum temperature (°C)



Daily 00-24h minimum temperature (°C)



- Valentia Observatory - Dublin Airport - Belmullet

Issued by Met Éireann on Wednesday 4th February 2025. This report is based on available preliminary data from 25 principal weather stations operated by Met Éireann. Synoptic station data is daily, which is midnight to midnight UTC. Long-Term Averages (LTAs) and "average" refer to the period 1991-2020. ¹ A rain day is a day with 0.2 mm or more of rainfall. ² A wet day is a day with 1.0 mm or more of rainfall. ³ A dull day is a day with less than 0.5 hours of sunshine. ⁴ A very wet day is a day with 10.0 mm or more of rainfall. ⁵ An absolute drought is a period of 15 or more consecutive days to none of which is credited 0.2 mm or more of precipitation. ⁶ A partial drought is a period of at least 29 consecutive days, the mean daily rainfall of which does not exceed 0.2 mm. ⁷ A dry spell is a period of 15 or more consecutive days to none of which is credited 1.0 mm or more of precipitation (i.e. daily tot < 1.0 mm). ⁸ A heatwave occurs where there are 5 consecutive days or more with maximum temperature over 25°C (that is, a daily maximum screen air temperature > 25°C). ⁹ An icing day is when the daily maximum air temperature stays below 0 °C (measured from 09-09 UTC or 00-00 UTC).
*Sunshine data is from the Autosol Network. LTAs for these sites are currently not used for comparison purposes. For more information, contact Met Éireann at 01-8064200 or e-mail: enq@met.ie