



# December 2025

## ***Mild and wet first two thirds, cold and dry final third***

December 2025 was mixed. Atlantic low pressure dominated the first two thirds, bringing mild, wet and sometimes windy conditions, followed by a cool, dry and less windy final third when high pressure to the north became established. An active North Atlantic jet stream kept low pressure anchored to the northwest of Ireland during the first two thirds of the month. This setup sent numerous active weather fronts across the country from the southwest, interspersed with sunshine and showers. Several organised showery troughs also brought some intense thundery falls at times, especially in the Southwest and West. The South and parts of the West saw the bulk of the rainfall during this period with the East and North drier overall. Storm Bram, named by Met Éireann, rapidly intensified as it approached Ireland from the Azores on Monday 8th and brought heavy rain and widespread gales on Tuesday 9th as the storm centre brushed the west coast of Ireland moving northwards. Bram, coming from a much warmer part of the Atlantic, brought a very warm tropical maritime airmass north over Ireland on Tuesday 9th, breaking daily maximum temperature records for December at numerous stations. High pressure built to the north of Ireland for the final third of the month and kept it mostly dry in an easterly airflow. It was sunny at times, especially over the Christmas period but got progressively cooler and cloudier towards the end of the month.

## **Rainfall: Wettest in the South and parts of the West**

December 2025 rainfall values were variable across the country. It was generally wetter than average in the South and parts of the West and drier than average in the East and North. Percentage of 1991-2020 Long-Term Average (LTA) monthly rainfall values ranged from 60% (78.0 mm) at Malin Head, Co Donegal to 161% (182.1 mm) at Johnstown Castle, Co Wexford (*its wettest December since 2015*). Monthly rainfall totals ranged from 48.4 mm (67% of its LTA) at Dublin Airport, Co Dublin to 198.2 mm (110% of its LTA) at Valentia Observatory, Co Kerry. The highest daily rainfall total was 51.1 mm at Johnstown Castle, Co Wexford on Sunday 14th (*its highest daily fall for December since 2021 and 2nd highest on record (length 84 years)*). The number of rain days<sup>0</sup> ranged from 15 days at Dublin Airport to 25 days at Sherkin Island, Co Cork. The number of wet days<sup>1</sup> ranged from 12 days at Dublin Airport to 20 days at a few stations. The number of very wet days<sup>3</sup> ranged from zero days at a few stations to 9 days at Valentia Observatory, Co Kerry.

## **Temperature: Above average nearly everywhere, especially in the East**

Nearly all mean air temperatures were above their LTA for the month. Deviations from mean air temperature ranged from -0.2 °C (7.9 °C mean temperature) at Valentia Observatory, Co Kerry to +1.9 °C at Casement Aerodrome, Co Dublin and Phoenix Park, Co Dublin (7.4 °C, 7.5 °C mean temperatures respectively). Mean temperatures for the month ranged from 5.7 °C (1.0 °C above its LTA) at Knock Airport, Co Mayo to 8.6 °C (0.4 °C above its LTA) at Sherkin Island, Co Cork. The month's highest daily temperature was reported at Phoenix Park, Co Dublin on Tuesday 9th with a temperature of 17.2 °C (*its highest December maximum temperature on record (length 64 years)*). The month's lowest daily air minimum was recorded on Wednesday 31st at Ballyhaise, Co Cavan with -4.9 °C while the lowest grass minimum was -9.0 °C reported at Markree, Co Sligo on Christmas Day, Thursday 25th. All stations reported ground frost during the month. The number of days with ground frost ranged from 2 days at Knock Airport, Co Mayo to 19 days at Markree, Co Sligo. More than half of stations reported air frost. The number of days with air frost ranged from zero days at ten, mostly coastal stations, to 10 days at Markree, Co Sligo. Twelve stations broke their maximum daily temperature records for December during storm Bram.

## **Sunshine: Mostly above average, sunniest in the Southeast**

All available sunshine totals were above their LTA. Percentage of monthly sunshine values ranged from 107% (51.3 hours) at Casement Aerodrome, Co Dublin to 114% (52.7 hours) at Shannon Airport, Co Clare. Monthly sunshine totals ranged from 29.1 hours (no LTA comparison\*) at Belmullet, Co Mayo to 68.3 hours (no LTA comparison\*) at Johnstown Castle, Co Wexford. The highest number of daily sunshine hours recorded this month was 7.1 hours at both Dublin Airport, Co Dublin on Tuesday 2nd and Cork Airport, Co Cork on Christmas Day, Thursday 25th. The number of dull days<sup>2</sup> ranged from 12 days at Valentia Observatory, Co Kerry to 18 days at both Shannon Airport, Co Clare and Cork Airport.

## **Wind: Strong gales reported during storm Bram**

Monthly mean wind speeds ranged from 10.2 km/h (5.5 knots) at Moore Park, Co Cork to 30.5 km/h (16.5 knots) at Mace Head, Co Galway. Gales were reported on 12 days during the month, with up to strong gales reported on Tuesday 9th at four stations during storm Bram. The number of days with gales ranged from zero days at a few stations to 8 days at Mace Head, Co Galway. The number of days with up to strong gales ranged from zero days at most stations to 1 day at four stations. The month's highest 10-minute mean wind speed of 47 knots (87 km/h) was reported at both Sherkin Island, Co Cork and Roches Point, Co Cork on Tuesday 9th during storm Bram. The highest gust was 64 knots (119 km/h) reported at Sherkin Island, Co Cork on Tuesday 9th during storm Bram.

## **EXTREME VALUES AT SYNOPTIC STATIONS**

### **Rainfall**

Highest monthly total: 198.2 mm at Valentia Observatory, Co Kerry (110% of its LTA)  
Lowest monthly total: 48.4 mm at Dublin Airport, Co Dublin (67% of its LTA)  
Highest daily rainfall: 51.1 mm at Johnstown Castle, Co Wexford (45% of its monthly LTA) on Sun 14th (*its highest daily fall for December since 2021*)

### **Temperature**

Highest mean monthly temperature: 8.6°C at Sherkin Island, Co Cork (0.4°C above its LTA)  
Lowest mean monthly temperature: 5.7°C at Knock Airport, Co Mayo (1.0°C above its LTA)  
Highest air temperature: 17.2°C at Phoenix Park, Co Dublin (8.6°C above its LTA) on Tue 9th (*its highest December max on record (length 64 years)*)  
Lowest air temperature: -4.9 °C at Ballyhaise, Co Cavan (7.1°C below its LTA) on Wed 31st  
Lowest grass minimum: -9.0°C at Markree, Co Sligo on Thu 25th

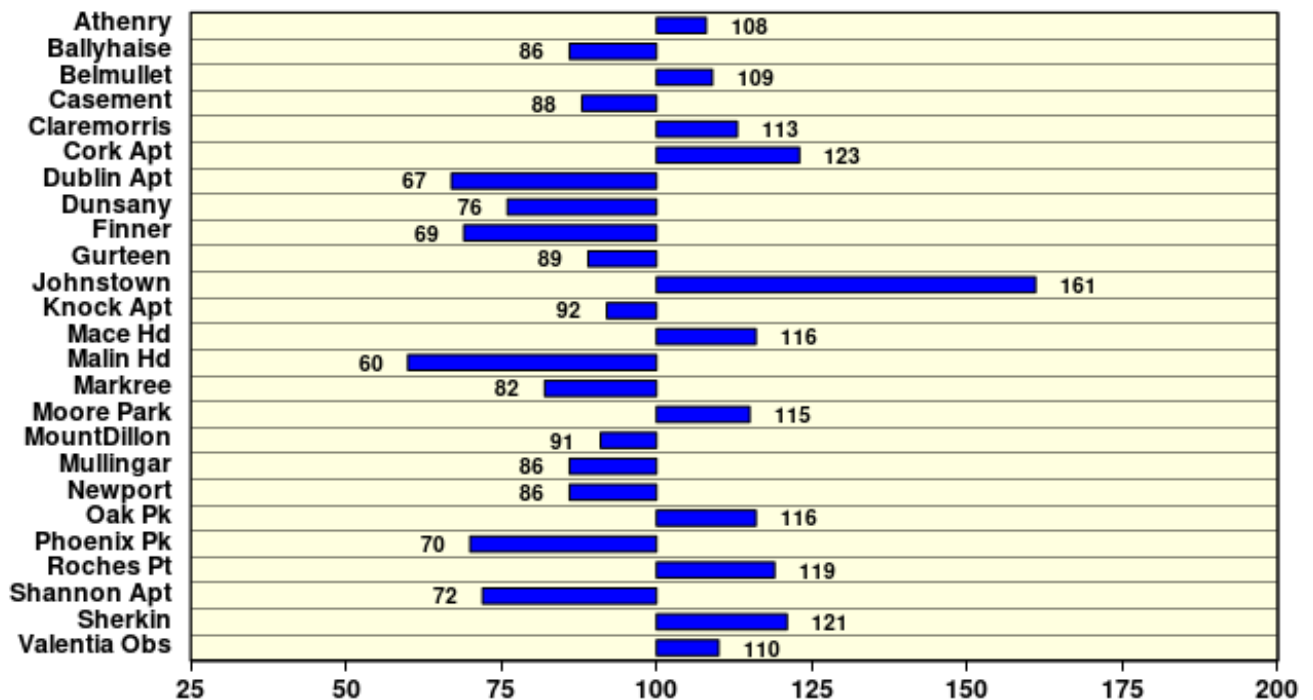
### **Sunshine**

Highest monthly total: 68.3 hours (daily mean 2.20 hrs/day) at Johnstown Castle, Co Wexford  
Lowest monthly total: 29.1 hours (daily mean 0.94 hrs/day) at Belmullet, Co Mayo  
Highest daily sunshine: 7.1 hours at both Dublin Airport, Co Dublin on Tue 2nd and Cork Airport, Co Cork and on Thu 25th

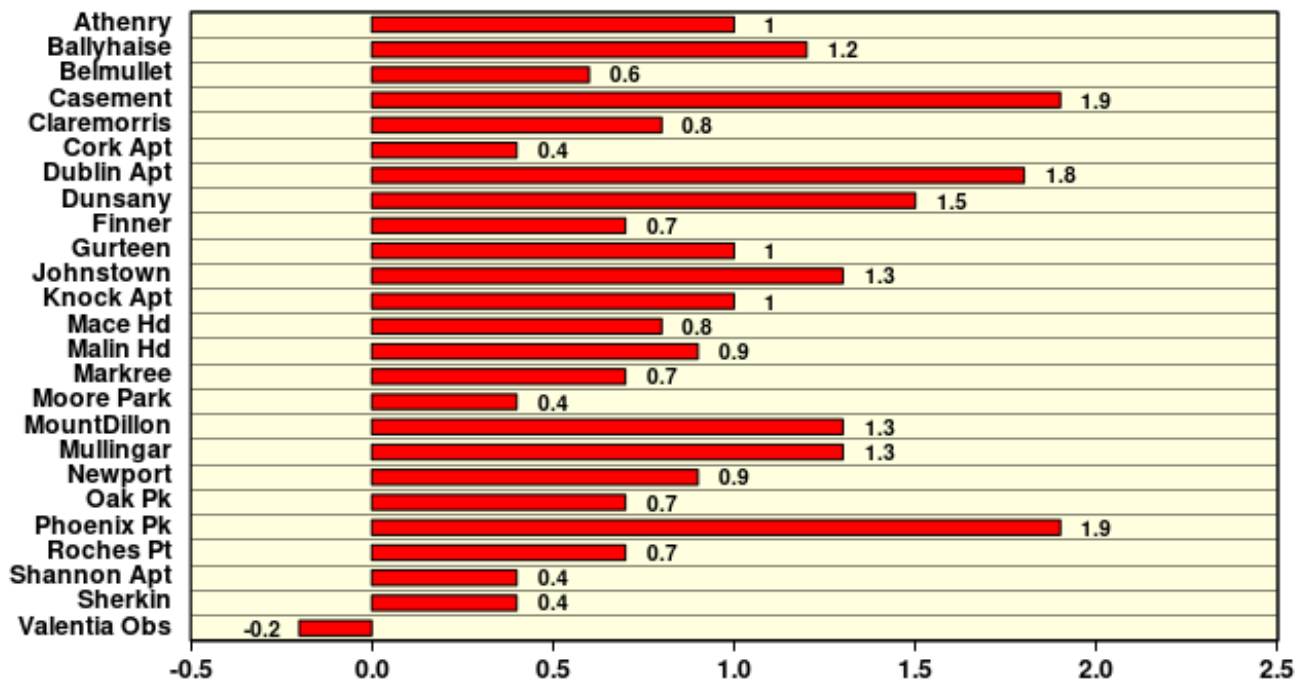
# December 2025

Based on Data from 1- 31 December 2025 on whole month basis

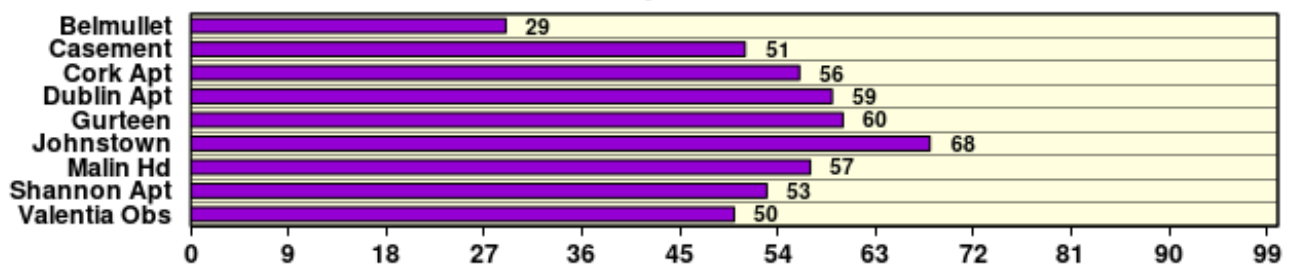
## Rainfall (% of average for period 1991-2020) on whole month basis



## Temperature (°C)(difference from average for period 1991-2020)



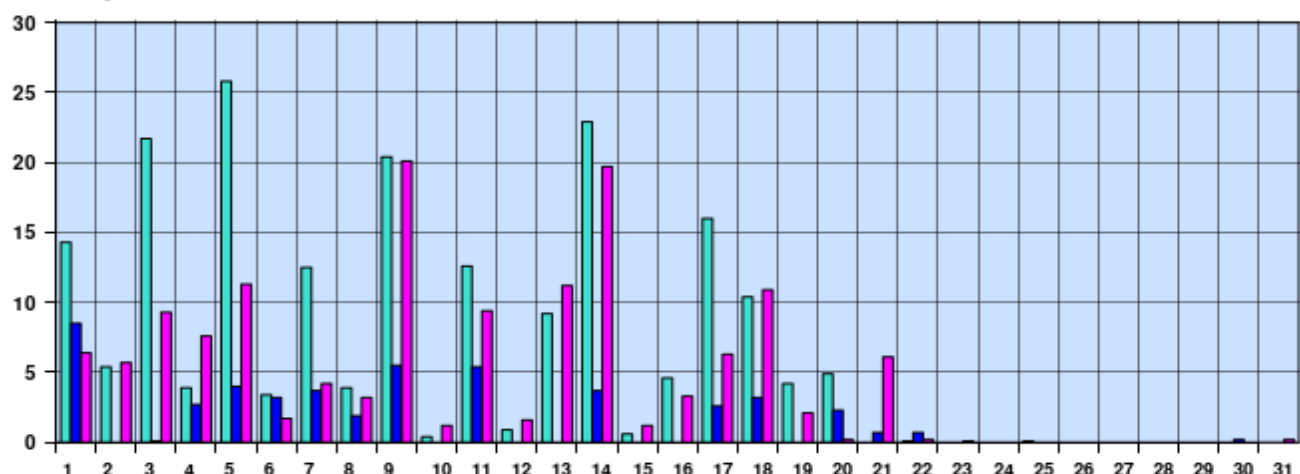
## Sunshine (Number of monthly sunshine hours)



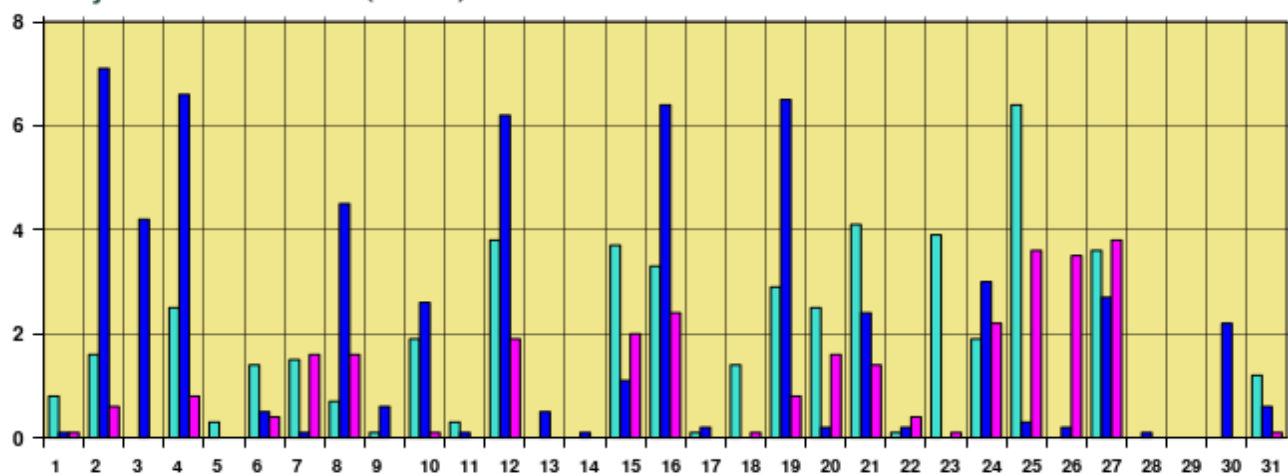
# December 2025 Daily Values at Selected Synoptic Stations

Based on data from 1-31 December 2025 on a pro rata basis

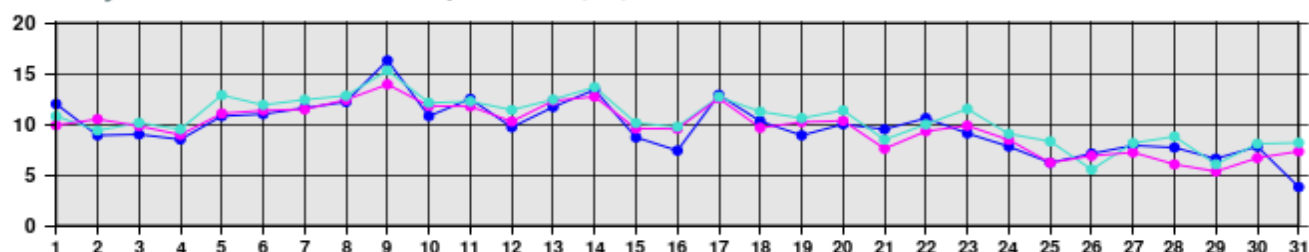
## Daily 00-24h rainfall values (mm)



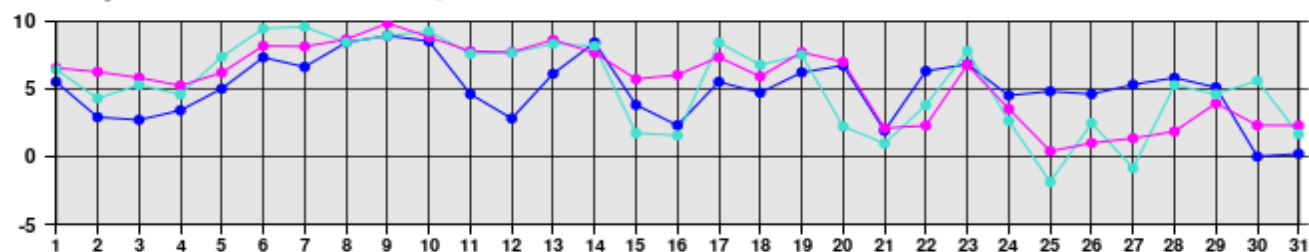
## Daily sunshine values (hours)



## Daily 00-24h maximum temperature (°C)



## Daily 00-24h minimum temperature (°C)



- Valentia Observatory - Dublin Airport - Belmullet

Issued by Met Éireann on Monday 5th January 2026. This report is based on available preliminary data from 25 principal weather stations operated by Met Éireann. Synoptic station data is daily, which is midnight to midnight UTC. Long-Term Averages (LTAs) and "average" refer to the period 1991-2020. <sup>1</sup> A rain day is a day with 0.2 mm or more of rainfall. <sup>2</sup> A wet day is a day with 1.0 mm or more of rainfall. <sup>3</sup> A dull day is a day with less than 0.5 hours of sunshine. <sup>4</sup> A very wet day is a day with 10.0 mm or more of rainfall. <sup>5</sup> An absolute drought is a period of 15 or more consecutive days to none of which is credited 0.2 mm or more of precipitation. <sup>6</sup> A partial drought is a period of at least 29 consecutive days, the mean daily rainfall of which does not exceed 0.2 mm. <sup>7</sup> A dry spell is a period of 15 or more consecutive days to none of which is credited 1.0 mm or more of precipitation (i.e. daily tot < 1.0 mm). <sup>8</sup> A heatwave occurs where there are 5 consecutive days or more with maximum temperature over 25°C (that is, a daily maximum screen air temperature > 25°C). <sup>9</sup> An icing day is when the daily maximum air temperature stays below 0°C (measured from 09-09 UTC or 00-00 UTC).  
\*Sunshine data is from the Autosol Network. LTAs for these sites are currently not used for comparison purposes. For more information, contact Met Éireann at 01-8064200 or e-mail: [enq@met.ie](mailto:enq@met.ie)