



November 2025

Wet overall. Very mild first half, cooler second half

November 2025 was a wet month overall. The first half of the month was very mild, while the second half was cooler. The mobile Atlantic dominated theme, from the end of October, continued for the first two weeks of November, with very mild and often wet conditions prevailing. Storm Claudia, named by the Spanish Meteorological Agency (AEMET), stalled to the southwest of Ireland between Tuesday 11th and Sunday 16th, steering a warm tropical maritime airmass, along with numerous active weather fronts and pulses of heavy rain, northwards across the country. On Friday 14th and Saturday 15th, as high pressure to the north of Ireland began to sink south, a cold Arctic airmass undercut the warm tropical maritime airmass situated over Ireland and the UK, creating extra lift along a stalled frontal zone over the south of the country and tightened the isobars. This brought intense rainfall, especially to the Southeast, and very strong northeasterly winds. The rest of the third week was drier and colder as high pressure to the northwest took control and steered a cold Arctic airmass south over the country. This brought several very cold days with widespread frosts at night along with wintry showers, especially for the West and Northwest. Atlantic weather fronts encroached from the west late on Friday 21st bringing a spell of rain and milder temperatures. The remainder of the month saw Atlantic low pressure to the north bringing periods of rain or showers at times, interspersed with high pressure to the south bringing brief periods of clearer, cooler and drier conditions.

Rainfall: Above average in most places, wettest in the Midlands, South and East

November 2025 rainfall totals were above their 1991-2020 Long-Term Average (LTA) at the majority of stations. Percentage of monthly rainfall values ranged from 89% (116.4 mm) at Markree, Co Sligo to 206% (the month's highest monthly rainfall total of 237.2 mm) at Johnstown Castle, Co Wexford (*its wettest November on record (length 84 years)*). Monthly rainfall totals for the month were lowest at Oak Park, Co Carlow with 110.1 mm (119% of its LTA). The month's wettest day was also recorded at Johnstown Castle, Co Wexford with 66.9 mm on Friday 14th, associated with storm Claudia (*its highest daily fall for November on record*). The number of rain days⁰ ranged from 23 days at Phoenix Park, Co Dublin to 28 days at several stations. The number of wet days¹ ranged from 17 days at Phoenix Park, Co Dublin to 27 days at Claremorris, Co Mayo. The number of very wet days³ ranged from 2 days at Markree, Co Sligo to 9 days at Valentia Observatory, Co Kerry. It was the wettest November since 2009 at Cork Airport and the wettest since 2015 at six stations.

Temperature: Above average everywhere, warmest in the South and East

All mean air temperatures across the country were above their LTA for the month. Deviations from mean air temperature ranged from +0.3 °C at Belmullet, Co Mayo, Finner, Co Donegal and Newport, Co Mayo (9.1 °C, 8.3 °C, 8.8 °C mean temperatures respectively) to +1.0 °C at Casement Aerodrome, Co Dublin and Oak Park, Co Carlow (8.3 °C, 8.4 °C mean temperature respectively). Mean temperatures for the month ranged from 7.0 °C (0.6 °C above its LTA) at Knock Airport, Co Mayo to 10.3 °C (0.7 °C above its LTA) at Sherkin Island, Co Cork. The month's lowest temperature was recorded on Friday 21st with an air minimum of -4.5 °C reported at Mount Dillon, Co Roscommon and the lowest grass minimum of -8.6 °C reported at Markree, Co Sligo. The highest maximum temperature of 17.5 °C was reported on Wednesday 5th at Dunsany, Co Meath and on Thursday 6th at Phoenix Park, Co Dublin. All stations reported ground frost during the month. The number of days with ground frost ranged from 2 days at Knock Airport, Co Mayo to 18 days at Phoenix Park, Co Dublin. More than half of stations reported air frost. The number of days with air frost ranged from zero days at six coastal stations to 8 days at Moore Park, Co Cork.

Sunshine: Above average, sunniest in the East

All available sunshine totals were above their LTA. Percentage of monthly sunshine values ranged from 125% (84.2 hours) at Casement Aerodrome, Co Dublin to 127% (79.0 hours) at Shannon Airport, Co Clare. Monthly sunshine totals ranged from 48.4 hours (No LTA comparison*) at Belmullet, Co Mayo to 91.7 hours (No LTA comparison*) at Dublin Airport, Co Dublin. The highest number of daily sunshine hours recorded this month was 8.2 hours at Cork Airport, Co Cork on Monday 17th. The number of dull days² ranged from 8 days at Shannon Airport, Co Clare to 13 days at both Valentia Observatory, Co Kerry and Belmullet, Co Mayo.

Wind: Strong gales reported

Monthly mean wind speeds ranged from 5.4 knots (10.0 km/h) at Moore Park, Co Cork to 17.6 knots (32.6 km/h) at Malin Head, Co Donegal. Gales were reported on 11 days during the month with strong gale force winds reported on Sunday 23rd at Mace Head, Co Galway and Thursday 27th at both Mace Head, Co Galway and Malin Head, Co Donegal. The number of days with gales ranged from zero days at a few stations to 8 days at Malin Head, Co Donegal. The number of days with up to strong gales ranged from zero days at most stations to 2 days at Mace Head, Co Galway and 1 day at Malin Head, Co Donegal. Both the month's highest gust and 10-minute mean wind speed was reported at Malin Head, Co Donegal on Thursday 27th. The highest gust was 62 knots (115 km/h) while the month's highest 10-minute mean wind speed was 45 knots (83 km/h).

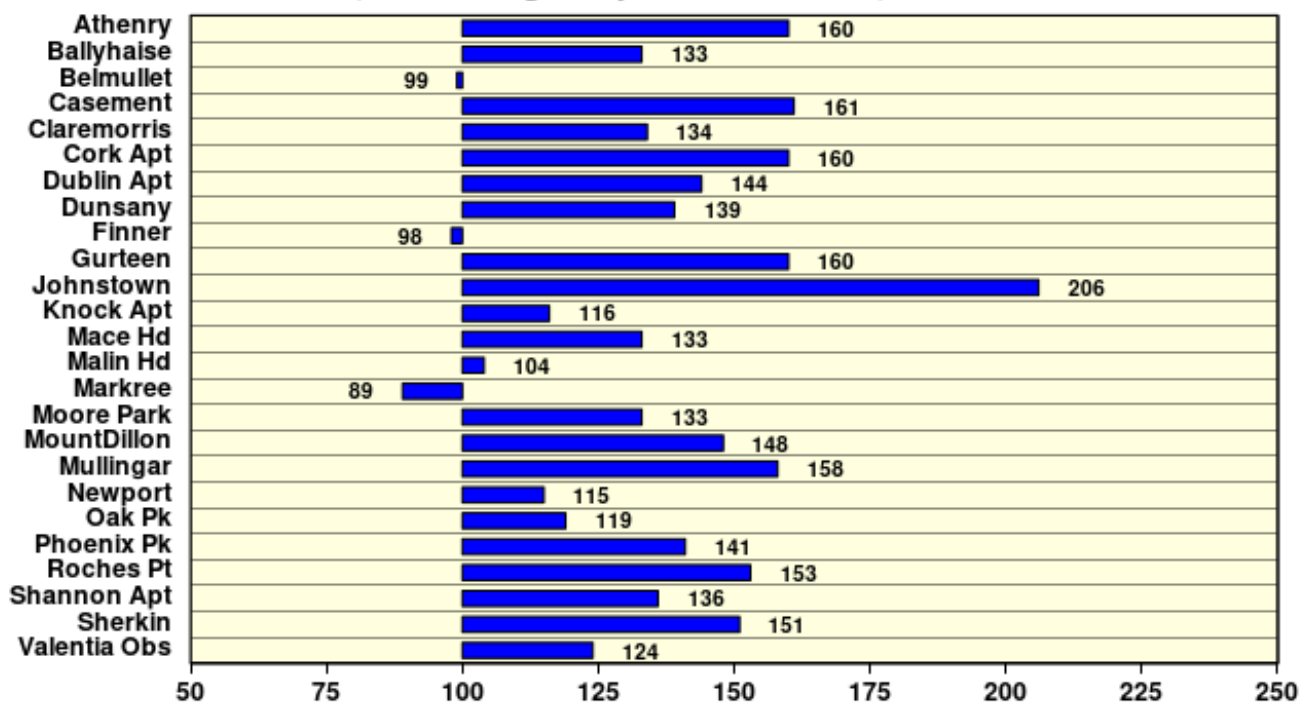
EXTREME VALUES AT SYNOPTIC STATIONS

Rainfall	Highest monthly total: 237.2 mm at Johnstown Castle, Co Wexford (206% of its LTA) (<i>its wettest November on record (length 84 years)</i>) Lowest monthly total: 110.1 mm at Oak Park, Co Carlow (119% of its LTA) Highest daily rainfall: 66.9 mm at Johnstown Castle, Co Wexford (58% of its monthly LTA) on Fri 14th (<i>its highest daily fall for November on record</i>)
Temperature	Highest mean monthly temperature: 10.3°C at Sherkin Island, Co Cork (0.7°C above its LTA) Lowest mean monthly temperature: 7.1°C at Knock Airport, Co Mayo (0.6°C above its LTA) Highest air temperature: 17.5°C at both Dunsany, Co Meath (6.8°C above its LTA) on Wed 5th (<i>its highest November max on record (length 33 years)</i>) and Phoenix park, Co Dublin (6.8°C above its LTA) on Thu 6th Lowest air temperature: -4.5 °C at Mount Dillon, Co Roscommon (7.8°C below its LTA) on Fri 21st Lowest grass minimum: -8.6°C at Markree, Co Sligo on Fri 21st
Sunshine	Highest monthly total: 91.7 hours (daily mean 3.06 hrs/day) at Dublin Airport, Co Dublin Lowest monthly total: 48.4 hours (daily mean 1.61 hrs/day) at Belmullet, Co Mayo Highest daily sunshine: 8.2 hours at Cork Airport, Co Cork on Mon 17th

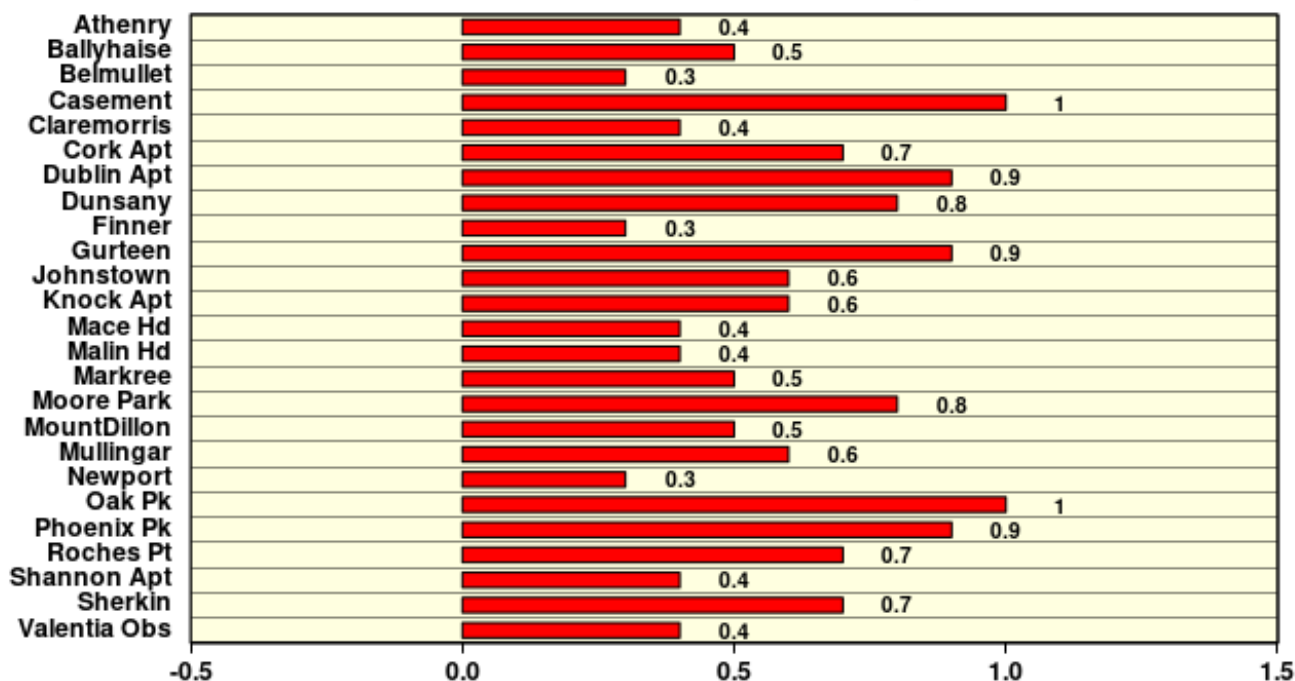
November 2025

Based on Data from 1- 30 November 2025 on whole month basis

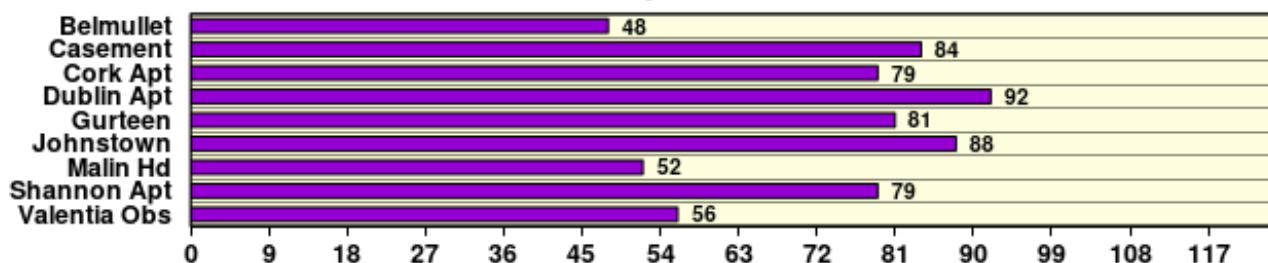
Rainfall (% of average for period 1991-2020) on whole month basis



Temperature (°C)(difference from average for period 1991-2020)



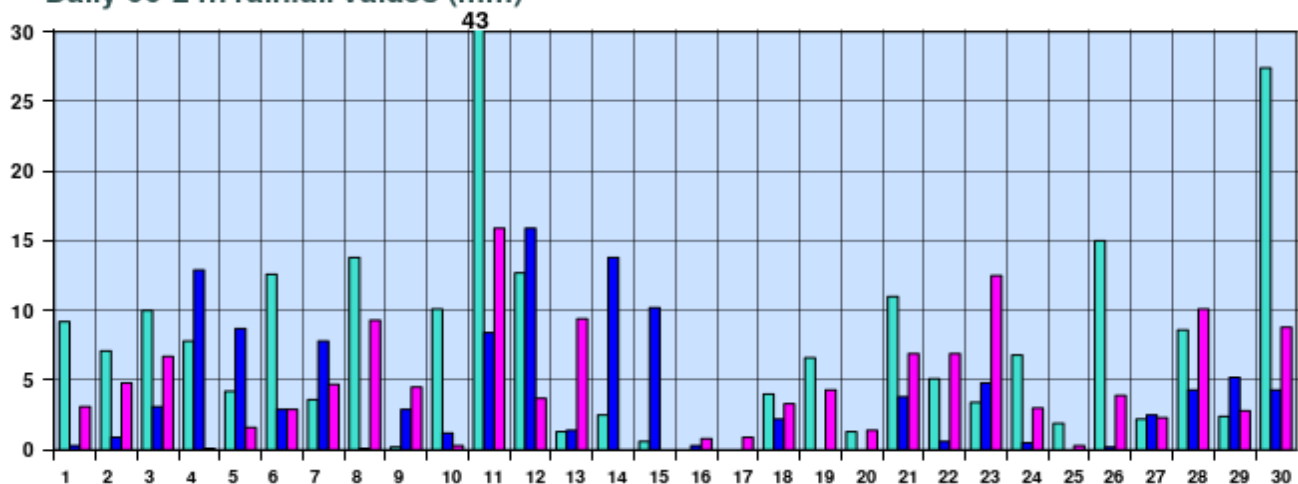
Sunshine (Number of monthly sunshine hours)



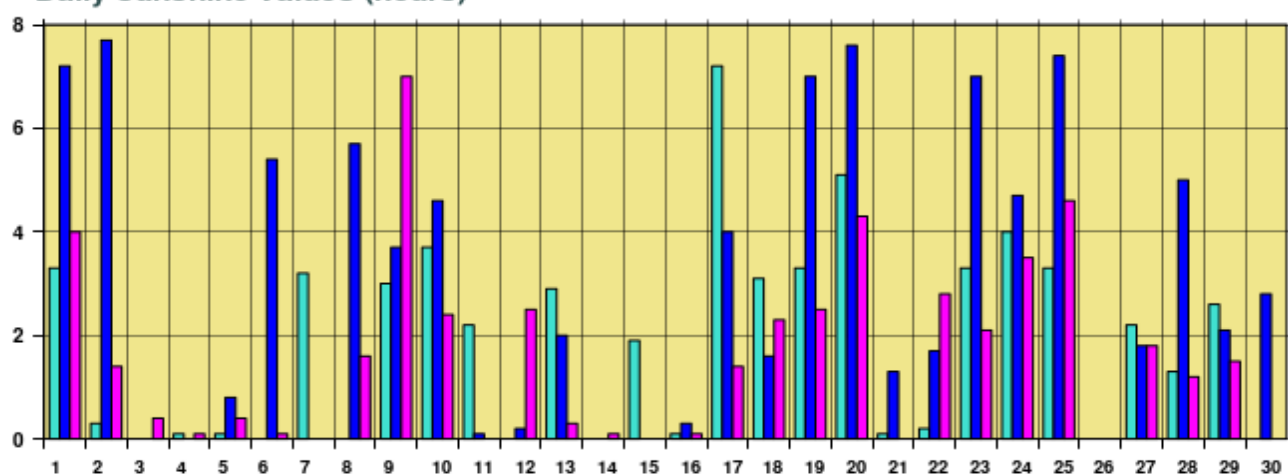
November 2025 Daily Values at Selected Synoptic Stations

Based on data from 1-30 November 2025 on a pro rata basis

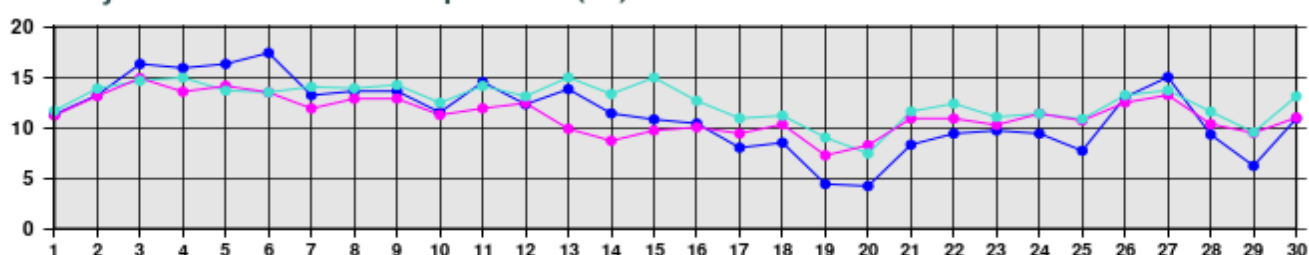
Daily 00-24h rainfall values (mm)



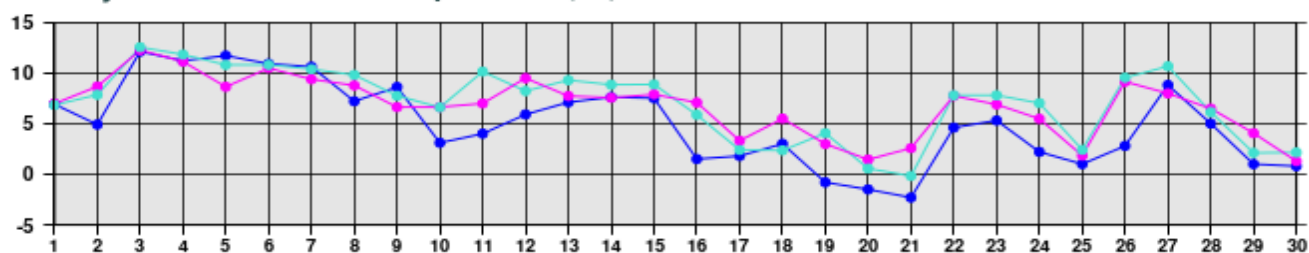
Daily sunshine values (hours)



Daily 00-24h maximum temperature (°C)



Daily 00-24h minimum temperature (°C)



- Valentia Observatory - Dublin Airport - Belmullet

Issued by Met Éireann on Tuesday 2nd December 2025. This report is based on available preliminary data from 25 principal weather stations operated by Met Éireann. Synoptic station data is daily, which is midnight to midnight UTC. Long-Term Averages (LTAs) and "average" refer to the period 1991-2020. ¹ A rain day is a day with 0.2 mm or more of rainfall. ² A wet day is a day with 1.0 mm or more of rainfall. ³ A dull day is a day with less than 0.5 hours of sunshine. ⁴ A very wet day is a day with 10.0 mm or more of rainfall. ⁵ An absolute drought is a period of 15 or more consecutive days to none of which is credited 0.2 mm or more of precipitation. ⁶ A partial drought is a period of at least 29 consecutive days, the mean daily rainfall of which does not exceed 0.2 mm. ⁷ A dry spell is a period of 15 or more consecutive days to none of which is credited 1.0 mm or more of precipitation (i.e. daily tot < 1.0 mm). ⁸ A heatwave occurs where there are 5 consecutive days or more with maximum temperature over 25°C (that is, a daily maximum screen air temperature > 25°C). ⁹ An icing day is when the daily maximum air temperature stays below 0 °C (measured from 09-09 UTC or 00-00 UTC).
*Sunshine data is from the Autosol Network. LTAs for these sites are currently not used for comparison purposes. For more information, contact Met Éireann at 01-8064200 or e-mail: enq@met.ie