

Warm overall after a cool start, wet and dull for most

June 2025 was warm with above average rainfall overall. Winds were generally between westerly and southerly, which brought a lot of cloud. The first third of June was dominated by low pressure to the north of Ireland bringing a generally westerly airflow. It was cooler than average during this period. Several bands of frontal rain crossed from west to east, interspersed with sunshine and showers, with the bulk of the rain in the West and North. The second third of the month was milder as low pressure stalled to the west and high pressure built to the east, bringing a southerly airflow. Initially, low pressure to the west was in control. Several frontal troughs pushed up from the south bringing bands of heavy rain, especially on Thursday 12th and Saturday 14th, with the heaviest falls in the East this time. Following this, high pressure built to the south and pushed north and then slowly moved east, drawing in a very warm air mass over the country from the south. This brought the hottest, driest and sunniest spell of the month between Monday 16th and Saturday 21st. The final third of the month was relatively cloudy with low pressure to the northwest steering several frontal rain bands across the country from the west. At the same time an intense area of high pressure built over mainland Europe. Heat wave conditions developed over southern, western and central Europe. Ireland stayed on the cloudier northern edge of the heat dome, which brought some uncomfortably high nighttime temperatures.

Rainfall: Above average in most places, driest in the South

The majority of monthly rainfall totals were above their 1991-2020 Long-Term Average (LTA). Percentage of monthly rainfall values ranged from 56% (the month's lowest monthly rainfall total of 47.0 mm) at Cork Airport, Co Cork to 206% (the month's highest monthly rainfall total of 165.0 mm) at Athenry, Co Galway (*its wettest June since 2012*). The highest daily rainfall total was 42.6 mm at Casement Aerodrome, Co Dublin on Saturday 14th (*its highest daily fall for June since 2009 and 64% of its June LTA*). The number of rain days⁰ ranged from 19 days at both Dublin Airport, and Casement Aerodrome, Co Dublin to 26 days at both Athenry, Co Galway and Claremorris, Co Mayo. The number of wet days¹ ranged from 10 days at Casement Aerodrome, Co Dublin to 23 days at Athenry, Co Galway. The number of very wet days³ ranged from 1 day at seven stations, including Oak Park, Co Carlow, to 5 days at Ballyhaise, Co Cavan, Finner, Co Donegal and Claremorris, Co Mayo. Generally stations in Leinster, Ulster and Connacht saw above average rainfall, while several stations in Munster saw below average rainfall.

Temperature: Above average everywhere, warmest in the East

All mean air temperatures across the country were above their LTA for the month. Deviations from mean air temperature ranged from +0.6 °C at both Sherkin Island, Co Cork (14.5 °C mean temperature) and Roches Point, Co Cork (14.6 °C mean temperature) to +1.8 °C (15.5 °C mean temperature) at Casement Aerodrome, Co Dublin (*its joint 3rd warmest June on record (length 61 years)*). Mean temperatures for the month ranged from 13.7 °C (1.2 °C above its LTA) at Knock Airport, Co Mayo to 15.6 °C (1.7 °C above its LTA) at Phoenix Park, Co Dublin (*its 4th warmest June on record (length 84 years)*). The month's highest temperature was reported at Mount Dillon, Co Roscommon on Friday 20th, with a temperature of 29.6 °C (*its 2nd highest June max on record (length 15 years)*). The month's lowest air temperature of 3.5 °C was reported at both Mount Dillon, Co Roscommon on Monday 2nd and Mullingar, Co Westmeath on Sunday 8th. The lowest grass minimum of -1.9 °C was reported at Mount Dillon, Co Roscommon on Monday 2nd. There were no air frosts reported this month. Less than half of stations reported ground frost. The number of days with ground frost ranged from zero days at most stations to 2 days at a few stations. Malin Head, Co Donegal had its highest maximum temperature for June since 1957 with 25.5 °C on Friday 20th. Two stations, Phoenix Park, Co Dublin (with 19.0 °C) and Oak Park, Co Carlow (with 18.1 °C) reported record high all-calendar-month minimum temperatures on Saturday 28th (*using 09-09 UTC values*). On the same day, Dublin Airport (with 18.4 °C), Casement Aerodrome, Co Dublin (with 18.0 °C), Dunsany, Co Meath (with 17.2 °C) and Johnstown Castle, Co Wexford (with 16.0 °C) reported record high minimum temperatures for June (*using 09-09 UTC values*).

Sunshine: Below average, dulllest in the West

The majority of monthly sunshine totals were below their LTA. Percentage of monthly sunshine values ranged from 92% (monthly sunshine total of 152.6 hours) at Shannon Airport, Co Clare to 106 % (the month's highest monthly sunshine total of 178.6 hours) at Casement Aerodrome, Co Dublin. Monthly sunshine totals were lowest at Knock Airport, Co Mayo with 92.6 hours (no LTA comparison*). The highest number of daily sunshine hours recorded this month was 15.0 hours at Johnstown Castle, Co Wexford on Wednesday 18th. The number of dull days² ranged from 3 days at a few stations to 7 days at several stations.

Wind: Gales reported on one day at two stations

Monthly mean wind speeds ranged from 5.6 knots (10.4 km/h) at Ballyhaise, Co Cavan to 14.5 knots (26.9 km/h) at Mace Head, Co Galway. Gales were reported on Monday 2nd June at both Mace Head, Co Galway and Belmullet, Co Mayo. There were no strong gales or storms reported this month. The month's 10-minute mean wind speed was reported at both Mace Head, Co Galway and Belmullet, Co Mayo on Monday 2nd, with 38 knots (70 km/h). The highest gust was 50 knots (93 km/h) reported at Belmullet, Co Mayo on Monday 2nd.

EXTREME VALUES AT SYNOPTIC STATIONS

Rainfall

Highest monthly total: 165.0 mm at Athenry, Co Galway (206% of its LTA) (*its wettest June since 2012*)
 Lowest monthly total: 47.0 mm at Cork Airport, Co Cork (56% of its LTA)
 Highest daily rainfall: 42.6 mm at Casement Aerodrome, Co Dublin (64% of its monthly LTA) on Sat 14th (*its highest daily fall for June since 2009*)

Temperature

Highest mean monthly temperature: 15.6°C at Phoenix Park, Co Dublin (1.7°C above its LTA) (*its 4th warmest June on record (length 84 years)*)
 Lowest mean monthly temperature: 13.7°C at Knock Airport, Co Mayo (1.2°C above its LTA)
 Highest air temperature: 29.6°C at Mount Dillon, Co Roscommon (11.3°C above its LTA) on Fri 20th (*its 2nd highest June max on record (length 15 years)*)
 Lowest air temperature: 3.5°C at both Mount Dillon, Co Roscommon (4.9°C below its LTA) on Mon 2nd and Mullingar, Co Westmeath (6.5°C below its LTA) on Sun 8th
 Lowest grass minimum: -1.9°C at Mount Dillon, Co Roscommon on Mon 2nd

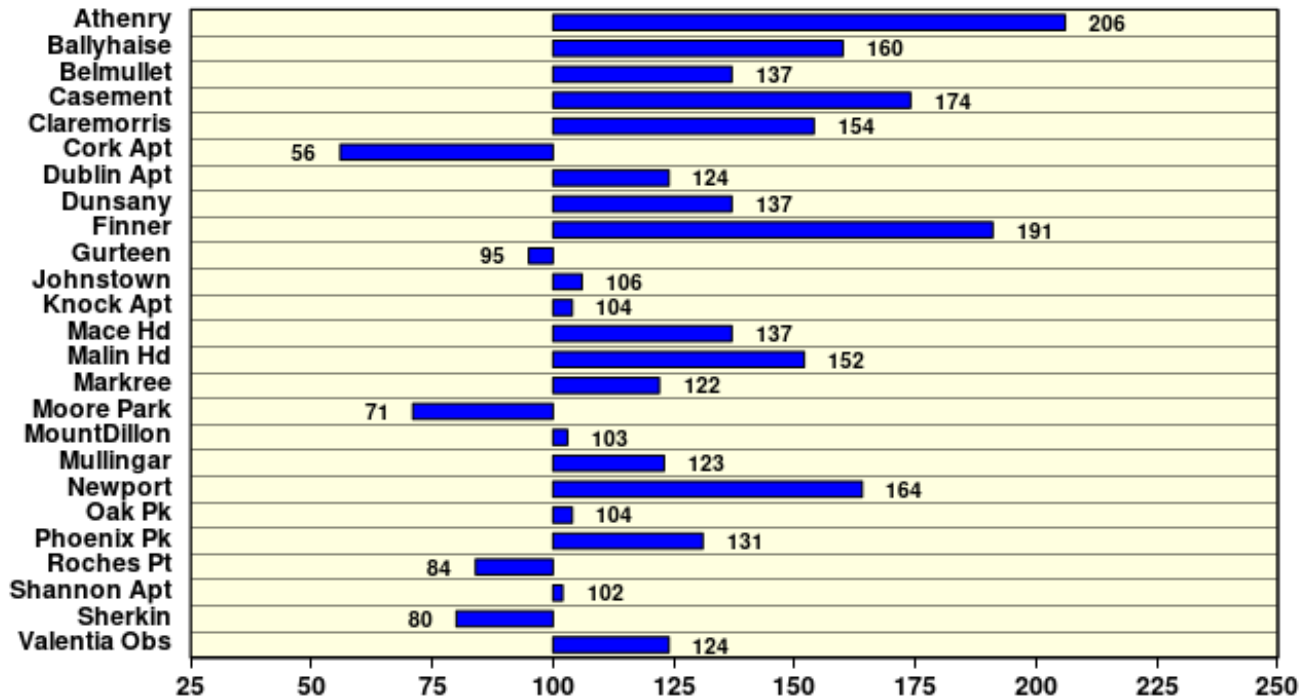
Sunshine

Highest monthly total: 178.6 hours (daily mean 5.95 hrs/day) at Casement Aerodrome, Co Dublin
 Lowest monthly total: 92.6 hours (daily mean 3.09 hrs/day) at Knock Airport, Co Mayo
 Highest daily sunshine: 15.0 hours at Johnstown Castle, Co Wexford on Wed 18th

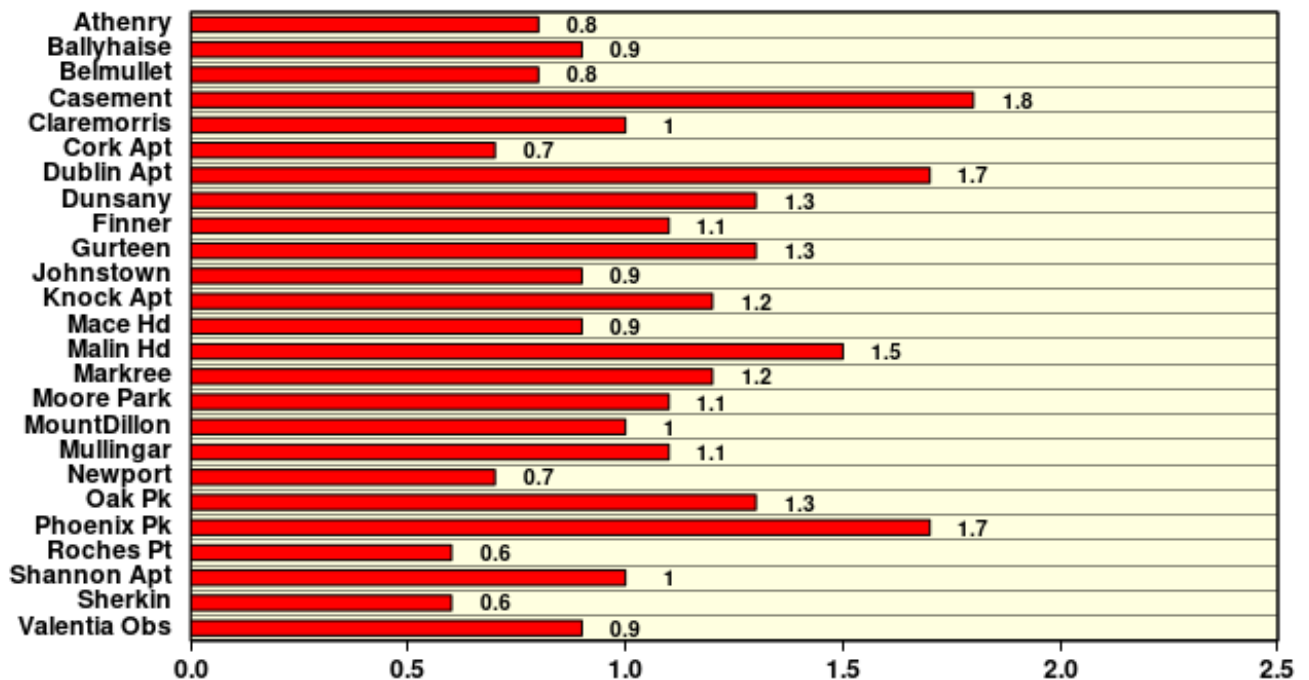
June 2025

Based on Data from 1- 30 June 2025 on whole month basis

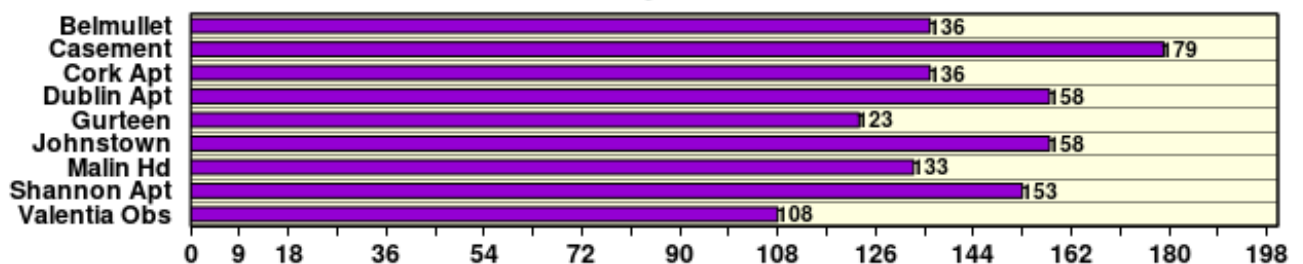
Rainfall (% of average for period 1991-2020) on whole month basis



Temperature (°C)(difference from average for period 1991-2020)



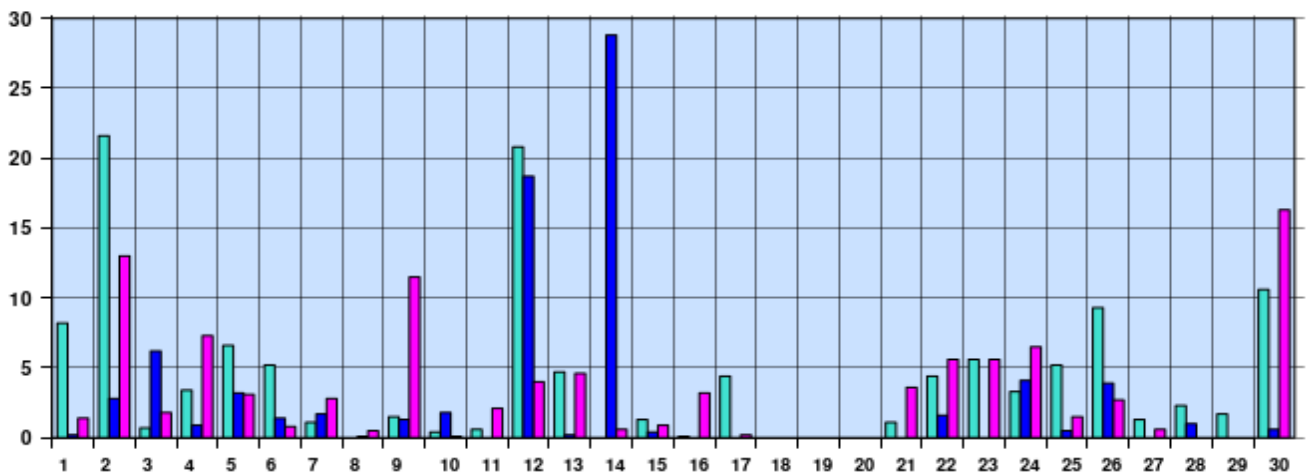
Sunshine (Number of monthly sunshine hours)



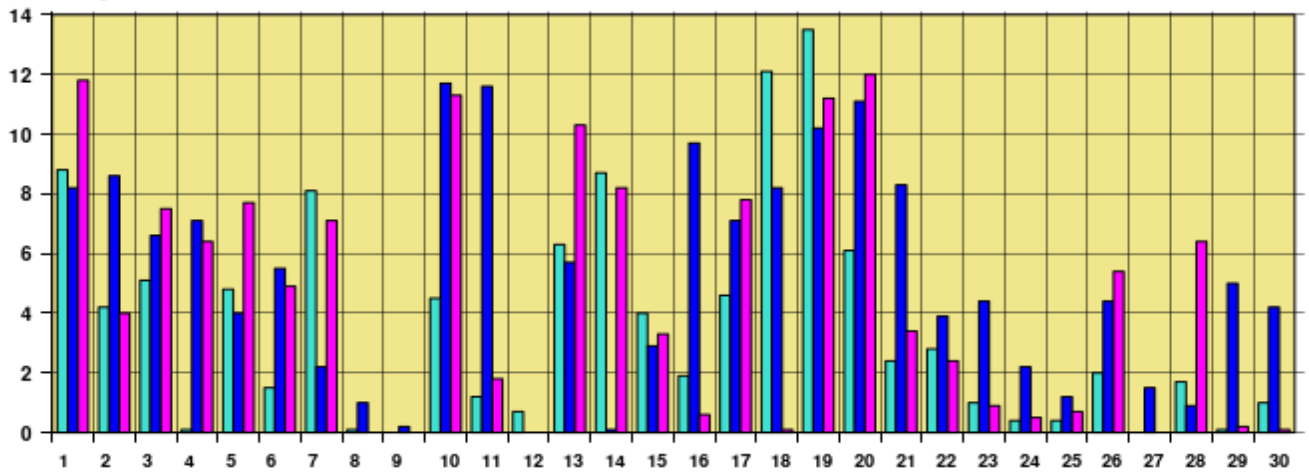
June 2025 Daily Values at Selected Synoptic Stations

Based on data from 1- 30 June 2025 on a pro rata basis

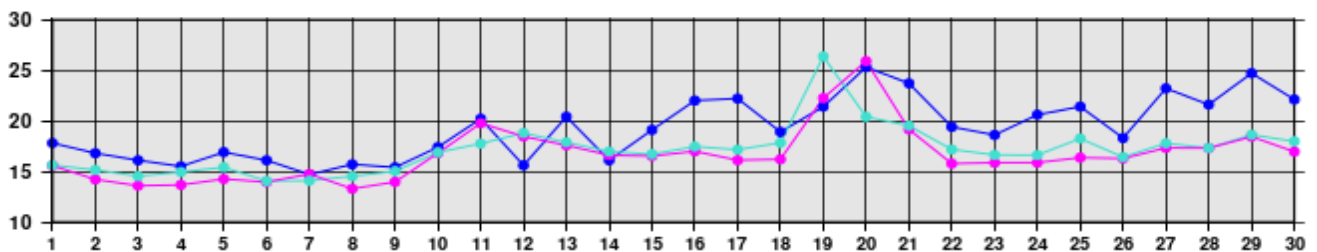
Daily 00-24h rainfall values (mm)



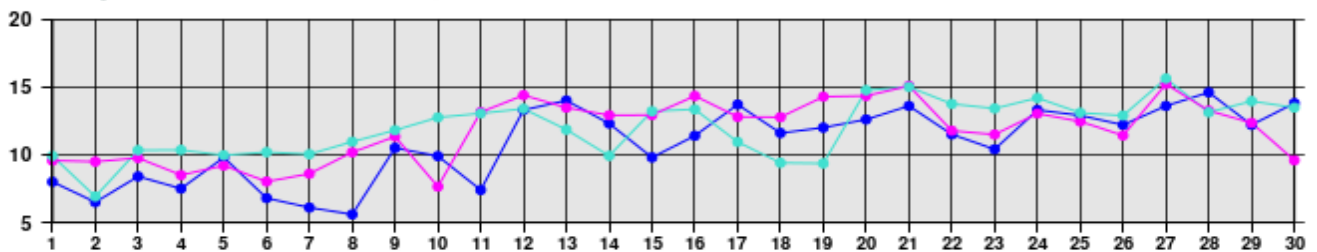
Daily sunshine values (hours)



Daily 00-24h maximum temperature (°C)



Daily 00-24h minimum temperature (°C)



- Valentia Observatory - Dublin Airport - Belmullet

Issued by Met Éireann on Wednesday 2nd July 2025. This report is based on available preliminary data from 25 principal weather stations operated by Met Éireann. Synoptic station data is daily, which is midnight to midnight UTC. Long-Term Averages (LTAs) and "average" refer to the period 1991-2020. ¹ A rain day is a day with 0.2 mm or more of rainfall. ² A wet day is a day with 1.0 mm or more of rainfall. ³ A dull day is a day with less than 0.5 hours of sunshine. ⁴ A very wet day is a day with 10.0 mm or more of rainfall. ⁵ An absolute drought is a period of 15 or more consecutive days to none of which is credited 0.2 mm or more of precipitation. ⁶ A partial drought is a period of at least 29 consecutive days, the mean daily rainfall of which does not exceed 0.2 mm. ⁷ A dry spell is a period of 15 or more consecutive days to none of which is credited 1.0 mm or more of precipitation (i.e. daily tot < 1.0 mm). ⁸ A heatwave occurs where there are 5 consecutive days or more with maximum temperature over 25°C (that is, a daily maximum screen air temperature > 25° C). ⁹ An icing day is when the daily maximum air temperature stays below 0 °C (measured from 09-09 UTC or 00-00 UTC)

*Sunshine data is from the Autosol Network. LTAs for these sites are currently not used for comparison purposes. For more information, contact Met Éireann at 01-8064200 or e-mail: enq@met.ie