



June 2024

Cool and dry

June 2024 was a relatively dry and cool month overall. The first half of the month was dominated by a northerly airflow from the Arctic as Ireland sat in between a blocking high pressure system to the west, over the Atlantic, and low pressure to the northeast, over Scandinavia. This kept temperatures and rainfall well below average. The wettest period of the month occurred between Thursday 13th and Saturday 15th when Atlantic low pressure broke through, introducing a pattern change to milder westerlies, along with widespread frontal rain followed by heavy showers. Atlantic westerlies stayed in control for most of the second half of the month with low pressure to the north and the Azores high building up from the southwest at times. The Azores high kept it mostly dry and mild between Sunday 16th and Thursday 20th, before low pressure to the north brought widespread frontal rain on Friday 21st. The Azores high built north-westwards again between Sunday 23rd and Wednesday 26th and brought the warmest period of the month, although cloudy at times, as a tropical maritime air mass moved over the country from the southwest. An unseasonably deep Atlantic low pressure system moved close to the north of the country on Thursday 27th, which brought the windiest period of the month and a change to a cooler Polar maritime air mass from the northwest. The month finished relatively cool with frontal rain or showers at times.

Rainfall: Below average everywhere, wettest in the Northwest

All monthly rainfall totals across the country were below their 1981-2010 Long-Term Average (LTA). Percentage of monthly rainfall values ranged from 43% (monthly rainfall total of 35.1 mm) at Cork Airport, Co Cork (*its driest June since 2018*) to 94% (monthly rainfall total of 67.7 mm) at Finner, Co Donegal. Monthly rainfall totals ranged from 30.4 mm (46% of its LTA) at Dublin Airport, Co Dublin to 80.7 mm (90% of its LTA) at Newport, Co Mayo. The highest daily rainfall total was 23.1 mm at Valentia Observatory, Co Kerry on Thursday 13th. The number of rain days⁰ ranged from 9 days at both Roche's Point, Co Cork and Cork Airport to 23 days at Malin Head, Co Donegal. The number of wet days¹ ranged from 5 days at Oak Park, Co Carlow to 16 days at both Newport, Co Mayo and Markree, Co Sligo. The number of very wet days³ ranged from zero days at a few stations to 4 days at Newport, Co Mayo.

Temperature: Below average nearly everywhere, coolest in the Northwest

Nearly all mean air temperatures were below their LTA for the month. Deviations from mean air temperature ranged from -1.3 °C (12.1 °C mean temperature) at Markree, Co Sligo to 0.1 °C (13.6 °C mean temperature) at Phoenix Park, Co Dublin. Mean temperatures for the month ranged from 11.6 °C (0.6 °C below its LTA) at Knock Airport, Co Mayo to 13.7 °C at both Shannon Airport, Co Clare (0.8°C below its LTA), Roche's Point, Co Cork (0.1°C below its LTA). The month's highest temperature was reported at Phoenix Park, Co Dublin on Monday 24th with a temperature of 26.6 °C. The month's lowest air minimum was recorded on Wednesday 12th at Claremorris, Co Mayo with 1.8 °C while the lowest grass minimum was -1.4 °C reported at Mullingar, Co Westmeath on Tuesday 11th. There was no air frost reported this month. Less than half of stations reported ground frost. The number of days with ground frost ranged from zero days at Shannon Airport, Co Clare to 4 days at both Mullingar, Co Westmeath and Mount Dillon, Co Roscommon.

Sunshine: Sunniest in the Southwest and Southeast

All available sunshine totals were above their LTA. Percentage of monthly sunshine values ranged from 109% (monthly sunshine total of 174.4 hours) at Casement Aerodrome, Co Dublin to 110% (monthly sunshine total of 171.5 hours) at Shannon Airport, Co Clare. Monthly sunshine totals ranged from 124.7 hours (No LTA comparison*) at Belmullet, Co Mayo to 181.3 hours (No LTA comparison*) at Cork Airport, Co Cork. The highest number of daily sunshine hours recorded this month was 15.9 hours at Gurteen, Co Tipperary on Wednesday 19th. The number of dull days² ranged from 1 day at a few stations to 5 days at both Valentia Observatory, Co Kerry and Belmullet, Co Mayo.

Wind: Gales reported

Monthly mean wind speeds ranged from 5.2 knots (9.6 km/h) at Ballyhaise, Co Cavan to 14.5 knots (26.9 km/h) at Malin Head, Co Donegal. Gales were reported on Thursday 27th. The number of days with gale force winds ranged from zero days at most stations to 1 day at Mace Head, Co Galway. There were no strong gales or storms reported this month. Both the month's highest gust and 10-minute mean wind speed was reported at Mace Head, Co Galway on Thursday 27th. The highest gust was 49 knots (91 km/h) while the month's highest 10-minute mean wind speed was 37 knots (69 km/h).

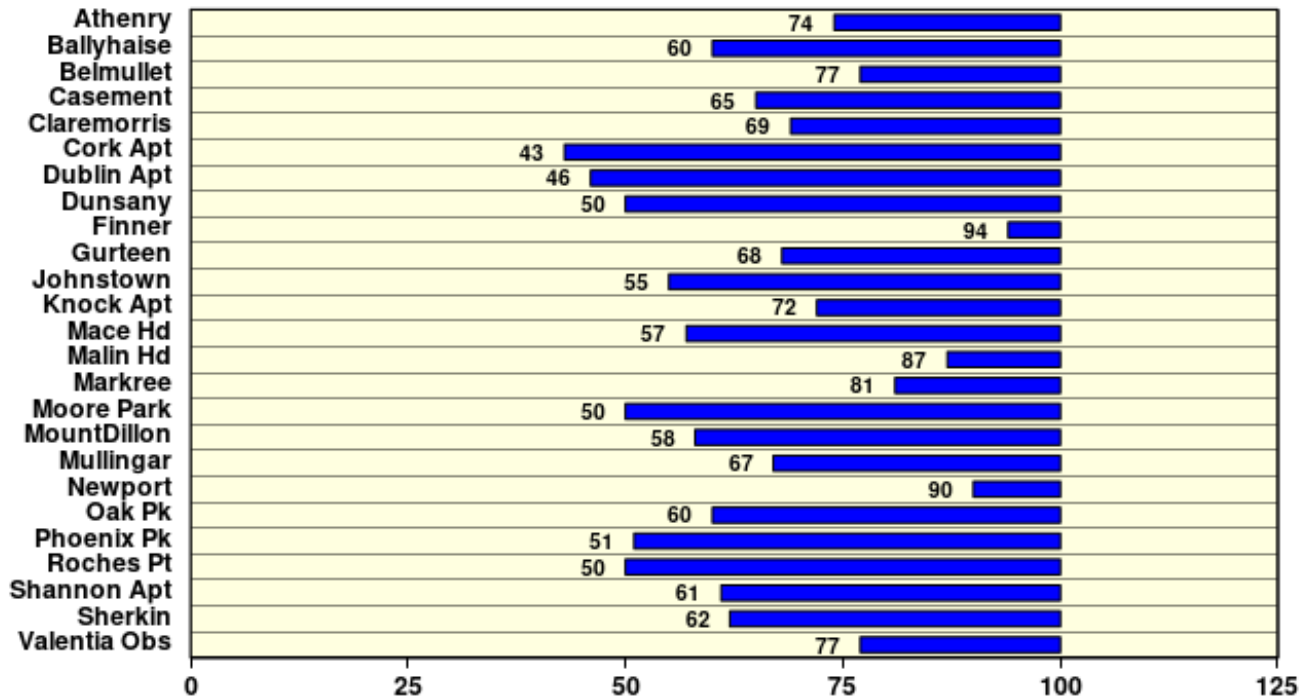
EXTREME VALUES AT SYNOPTIC STATIONS

Rainfall	Highest monthly total: 80.7 mm at Newport, Co Mayo (90% of its LTA) Lowest monthly total: 30.4 mm at Dublin Airport, Co Dublin (46% of its LTA) Highest daily rainfall: 23.1 mm at Valentia Observatory, Co Kerry (24% of its monthly LTA) on Thu 13th
Temperature	Highest mean monthly temperature: 13.7°C at both Shannon Airport, Co Clare (0.8°C below its LTA) and Roches Point, Co Cork (0.1°C below its LTA) Lowest mean monthly temperature: 11.6°C at Knock Airport, Co Mayo (0.6°C below its LTA) Highest air temperature: 26.6°C at Phoenix Park, Co Dublin (8.4°C above its LTA) on Mon 24th Lowest air temperature: 1.8°C at Claremorris, Co Mayo (7.1°C below its LTA) on Wed 12th Lowest grass minimum: -1.4°C at Mullingar, Co Westmeath on Tue 11th
Sunshine	Highest monthly total: 181.3 hrs (daily mean 6.04 hrs/day) at Cork Airport, Co Cork Lowest monthly total: 124.7 hrs (daily mean 4.16 hrs/day) at Belmullet, Co Mayo Highest daily sunshine: 15.9 hours both Gurteen, Co Tipperary on Wed 19th

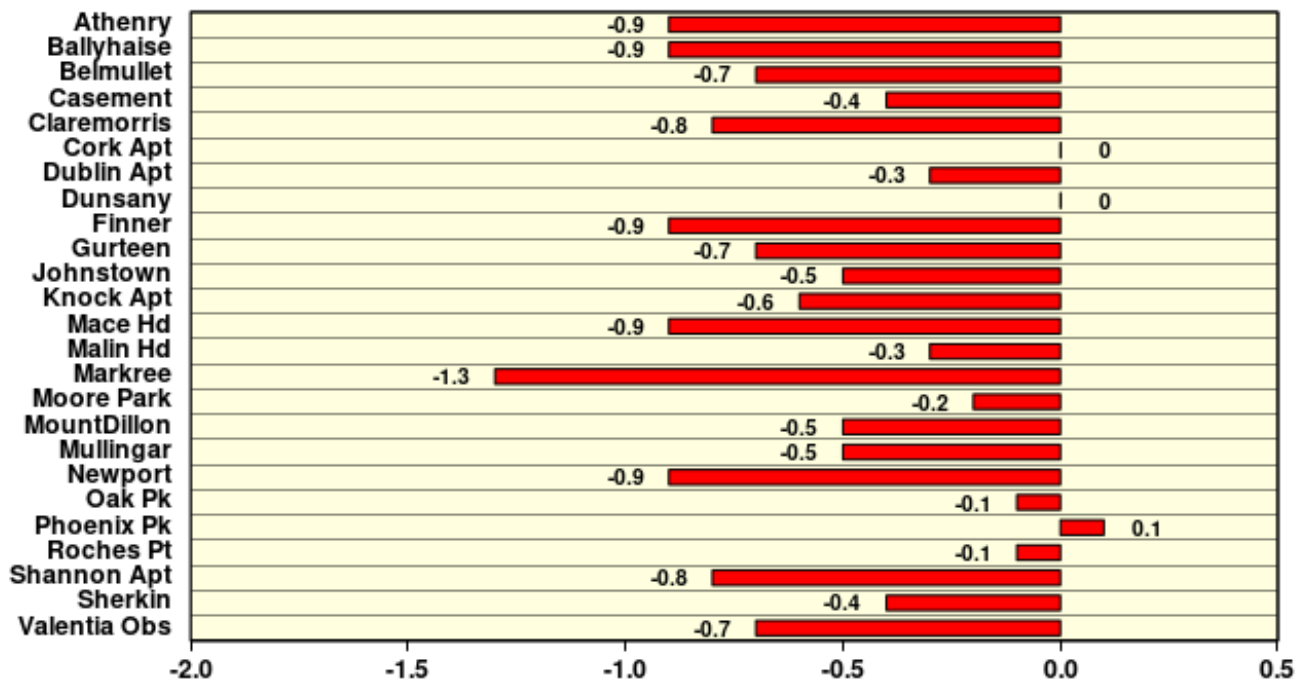
June 2024

Based on Data from 1- 30 June 2024 on whole month basis

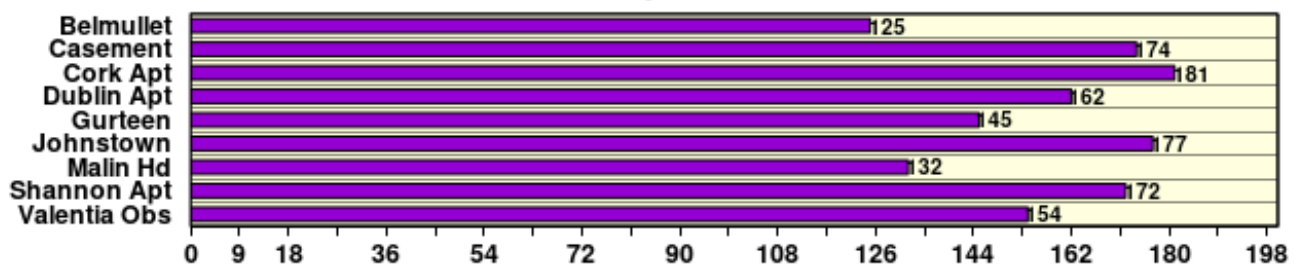
Rainfall (% of average for period 1981-2010) on whole month basis



Temperature (°C)(difference from average for period 1981-2010)



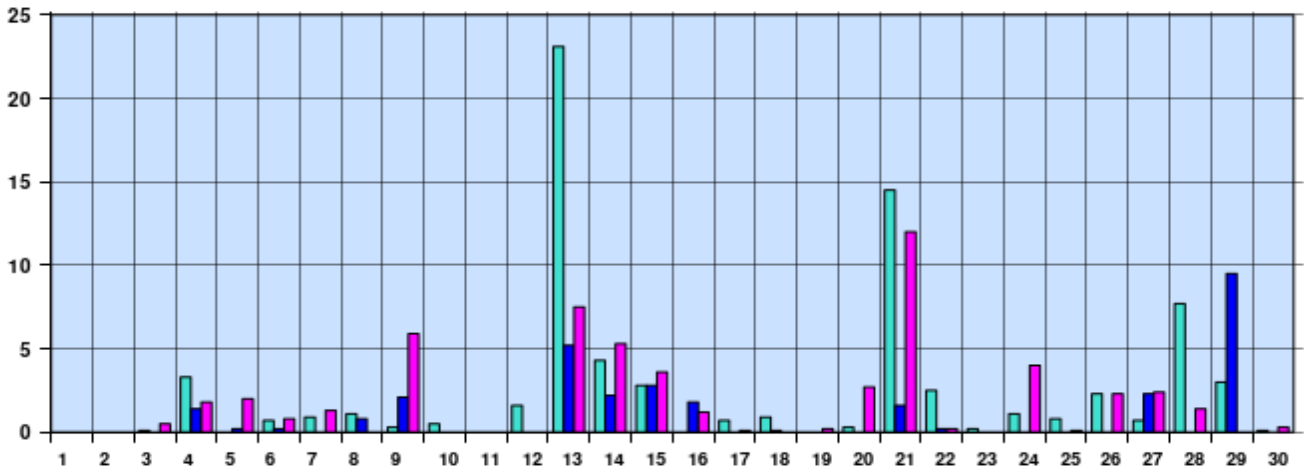
Sunshine (Number of monthly sunshine hours)



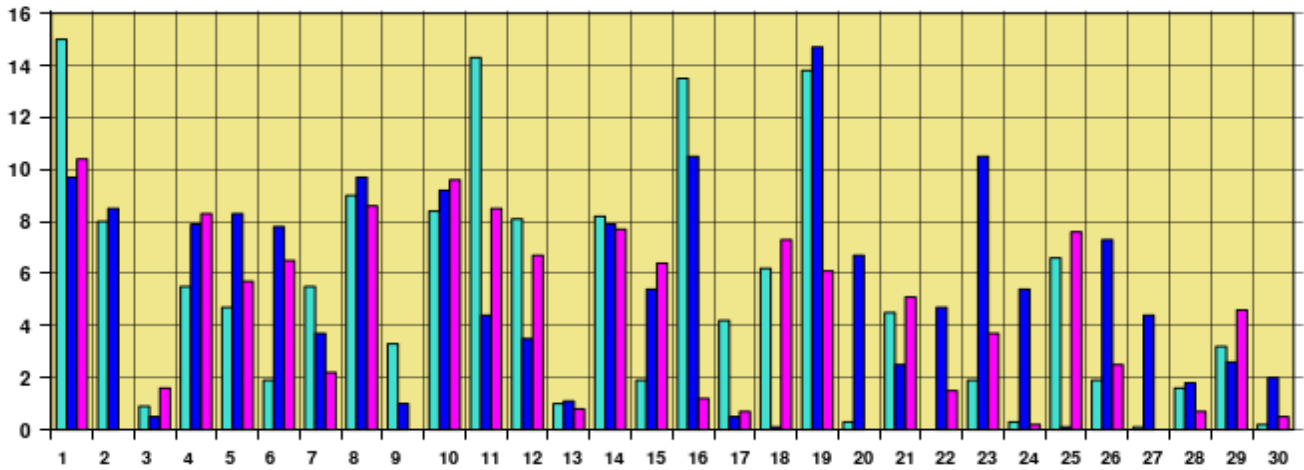
June 2024 Daily Values at selected synoptic stations

Based on data from 1-30 June 2024 on a pro rata basis

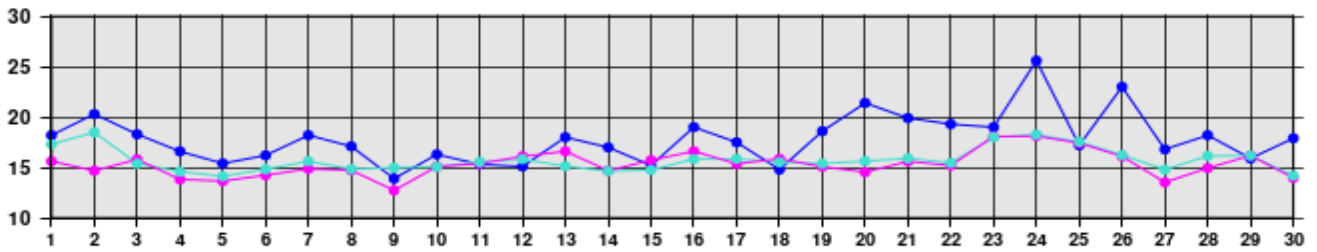
Daily 00-24h rainfall values(mm)



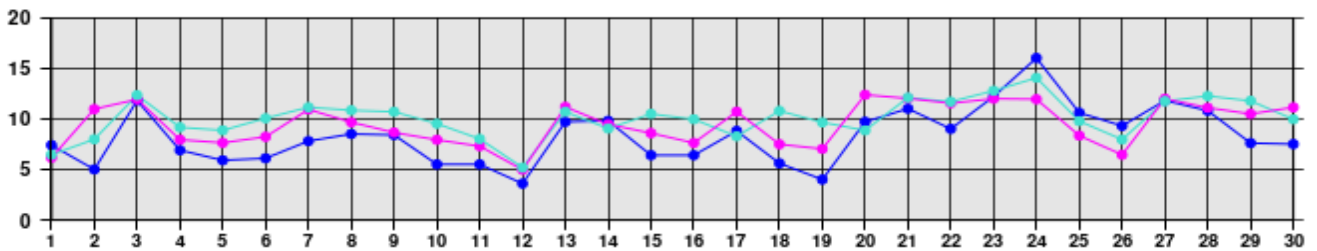
Daily sunshine values(hours)



Daily 00-24h maximum temperature (°C)



Daily 00-24h minimum temperature (°C)



- Valentia Observatory - Dublin Airport - Belmullet

Issued by Met Éireann on Tuesday 2nd July 2024. This report is based on available preliminary data from 25 principal weather stations operated by Met Éireann. Synoptic station data is daily, which is midnight to midnight UTC. Long-Term Averages (LTAs) and "average" refer to the period 1981-2010. ¹ A rain day is a day with 0.2 mm or more of rainfall. ^{1A} A wet day is a day with 1.0 mm or more of rainfall. ² A dull day is a day with less than 0.5 hours of sunshine. ³ A very wet day is a day with 10.0 mm or more of rainfall. ⁴ An absolute drought is a period of 15 or more consecutive days to none of which is credited 0.2 mm or more of precipitation. ⁵ A partial drought is a period of at least 29 consecutive days, the mean daily rainfall of which does not exceed 0.2 mm. ⁶ A dry spell is a period of 15 or more consecutive days to none of which is credited 1.0 mm or more of precipitation (i.e. daily tot < 1.0 mm). ⁷ A heatwave occurs where there are 5 consecutive days or more with maximum temperature over 25°C (that is, a daily maximum screen air temperature > 25° C). ⁸ An icing day is when the daily maximum air temperature stays below 0 °C (measured from 09-09 UTC or 00-00 UTC) *Sunshine data is from the Autosol Network. LTAs for these sites are currently not used for comparison purposes. For more information, contact Met Éireann at 01-8064200 or e-mail: enq@met.ie