



FEB 2019

Very mild and mostly dry

February started in a cold northerly polar maritime airflow with snow lying in places. This was short lived and from the 3rd, a milder westerly airflow took hold and continued for the rest of the first week, with rain or showers traversing the country from time to time. Storm Erik, a deep area of low pressure, passed close to the Northwest of Ireland and gave the windiest spell of the month on the 8th and 9th. A blocking area of high pressure set up over mainland Europe on the 12th, keeping it mostly dry over Ireland up to the 15th and introducing a mild southerly airflow that dominated the second half of the month. During the third week, some weak weather fronts broke through giving rain or showers at times especially on the 19th, but amounts stayed low in most places. High pressure over mainland Europe intensified again and moved closer to Ireland during the fourth week. This resulted in mostly settled weather up to the end of the month with good sunshine and record high temperatures in many places.

Rainfall: Drier than average nearly everywhere

Nearly all rainfall totals were below their Long-Term Average (LTA) for the month. Percentage of monthly rainfall values ranged from 39% (the month's lowest monthly rainfall total of 19.9 mm) at Dublin (Phoenix Park) to 124% (monthly rainfall total of 120.2 mm) at Belmullet, Co Mayo. Monthly rainfall totals were as much as 149.8 mm (121% of LTA) at Valentia Observatory, Co Kerry. The month's wettest day was also recorded at Valentia Observatory, Co Kerry with 26.3 mm on the 19th. The number of rain days ranged from 9 days at Dublin Airport to 25 days at Belmullet, Co Mayo. The number of wet days¹ ranged from 7 days at Dublin (Phoenix Park) to 18 days at both Mace Head, Co Galway and Valentia Observatory, Co Kerry. The number of very wet days³ ranged from zero days at a few stations to 5 days at Valentia Observatory, Co Kerry.

Temperature: Warmer than average everywhere

All mean air temperatures across the country were above their Long-Term Average (LTA). Deviations from mean air temperature for the month ranged from 1.6 °C at various stations to 2.9 °C (8.3 °C mean temperature) at Finner, Co Donegal. Mean temperatures for the month ranged from 6.6 °C (2.3 °C above LTA) at Knock Airport, Co Mayo to 9.2 °C (2.0 °C above LTA) at Valentia Observatory, Co Kerry. The month's lowest temperatures were recorded on the 2nd. The lowest air minimum was reported at Athenry, Co Galway with -5.1 °C and the lowest grass minimum was reported at Gurteen, Co Tipperary with -10.0 °C. The highest maximum was reported on the 25th at Mount Dillon, Co Roscommon with 17.3 °C. Between the 25th and 26th, over half of stations recorded their highest February maximum temperature since records began at their respective stations. All stations reported ground frost during the month. The number of days with ground frost ranged from 3 days at a few stations to 18 days at Dublin (Phoenix Park). More than half of stations reported air frost. The number of days with air frost ranged from zero days at a few stations to 9 days at Dublin Airport.

Sunshine: Brightest in the East and South

Sunshine totals were variable with regard to Long-Term Average (LTA). Percentage of monthly sunshine values ranged from 84% (the month's lowest monthly sunshine total of 50.8 hours) at Knock Airport, Co Mayo to 166 % (the month's highest monthly sunshine total of 117.5 hours) at Casement Aerodrome, Co Dublin. The highest number of daily sunshine hours recorded this month was 10.1 hours at Johnstown Castle*, Co Wexford on the 26th. The number of dull days² ranged from 4 at Casement Aerodrome, Co Dublin to 14 at Valentia Observatory*, Co Kerry.

Wind: Storm Erik brought storm force winds to the West on the 8th

Monthly mean wind speeds ranged from 7.8 knots (14.4 km/h) at Mount Dillon, Co Roscommon to 17.5 knots (32.4 km/h) at Mace Head, Co Galway. The number of days with gales ranged from zero days at a few stations to 6 days at Belmullet, Co Mayo. Strong gales were reported on 2 days at both Mace Head and Finner, Co Donegal. Mean wind speeds were storm force on the 8th at Mace Head (due to Storm Erik). This day and station produced the month's highest gust and 10-minute mean wind speed. The highest gust was 65 knots (120 km/h) while the month's highest 10-minute mean wind speed was 49 knots (91 km/h). Towards the end of the month, there was dense fog in places, mainly in the Midlands and East.

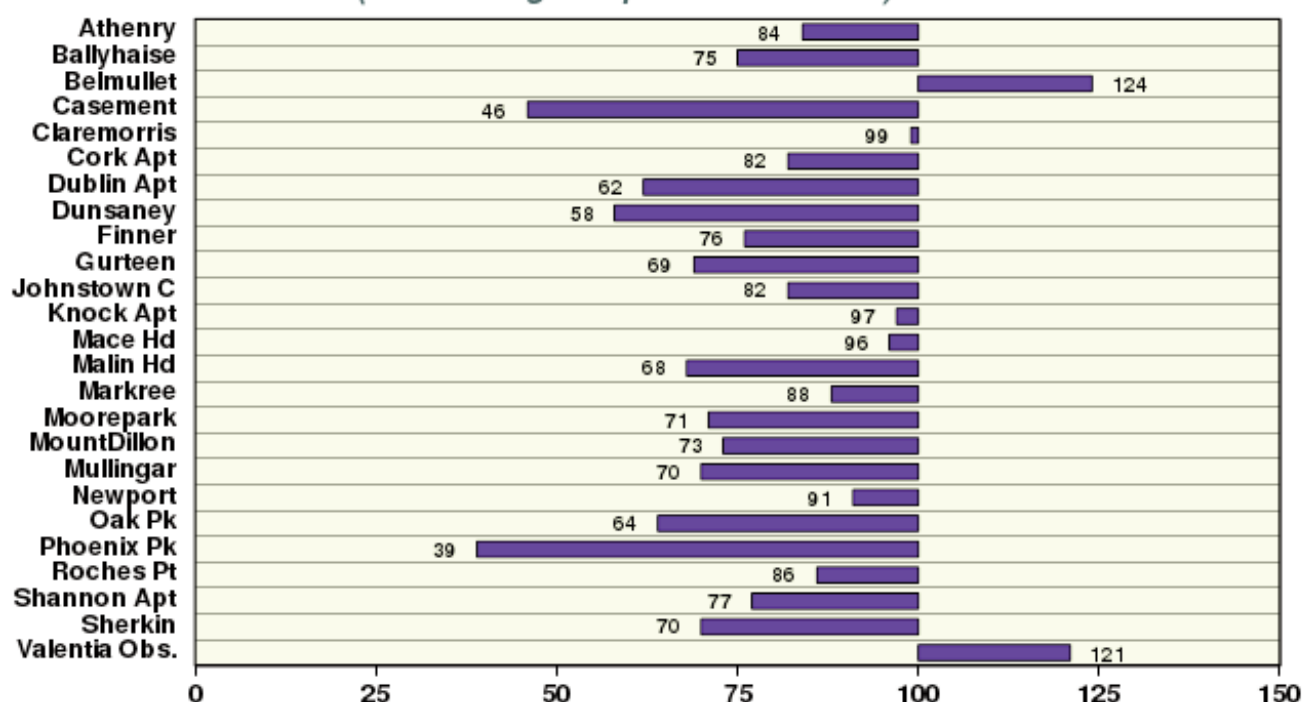
EXTREME VALUES AT SYNOPTIC STATIONS

Rainfall	Highest total: 149.8 mm (121% of LTA) at Valentia Observatory, Co Kerry Lowest total: 19.9 mm (39% of LTA) at Dublin (Phoenix Park) (<i>its driest February since 2012</i>) Highest daily rainfall: 26.3 mm at Valentia Observatory, Co Kerry on the 19th
Temperature	Highest mean temperature: 9.2°C at Valentia Observatory, Co Kerry (2.0°C above LTA) (<i>its warmest February since 1893</i>) Lowest mean temperature: 6.6°C at Knock Airport, Co Mayo Highest air temperature: 17.3°C at Mount Dillon on the 25th (<i>its highest February max temp since 2006</i>) Lowest air temperature: -5.1°C at Athenry, Co Galway on the 2nd Lowest grass minimum: -6.5°C at Gurteen, Co Tipperary on the 2nd
Sunshine	Highest monthly total: 117.5 hrs (daily mean 4.2 hrs/day) at Casement Aerodrome (<i>its sunniest February since 1964</i>) Lowest monthly total: 50.8 hrs (daily mean 1.8 hrs/day) at Knock Airport, Co Mayo Highest daily sunshine: 10.1 hrs at Johnstown Castle*, Co Wexford on the 26th

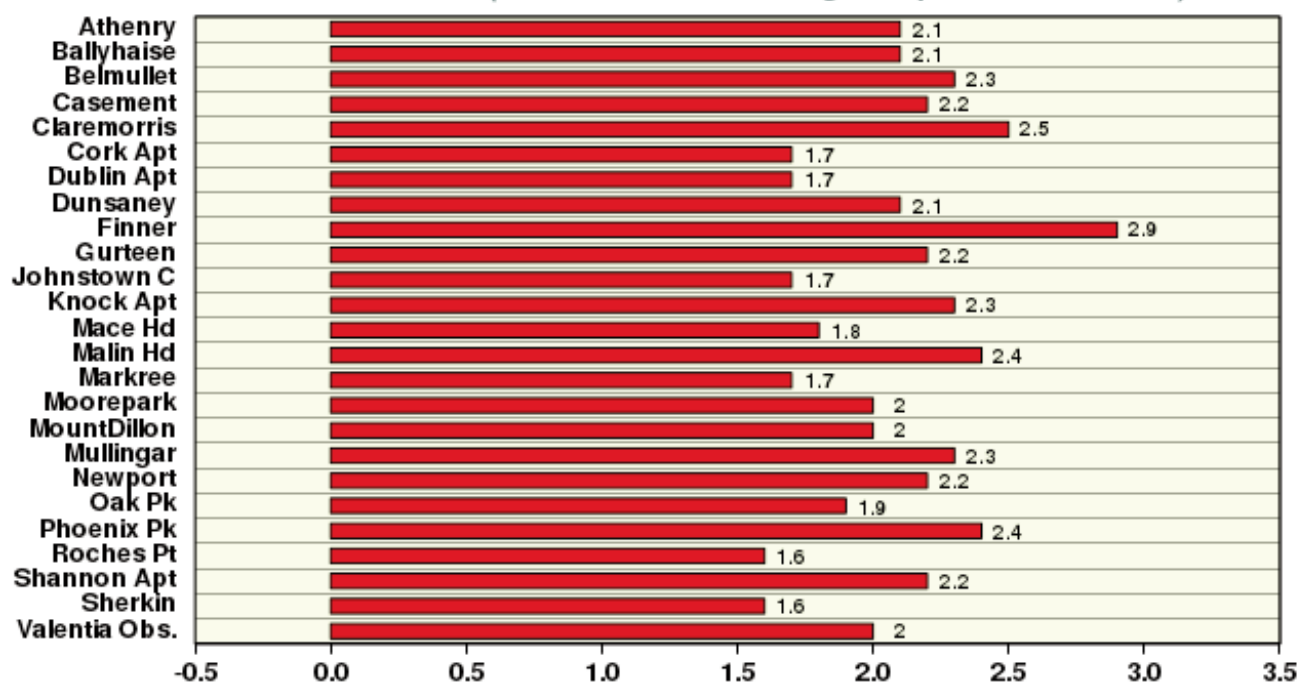
February 2019

Based on Data from 1- 28 February 2019 on whole month basis

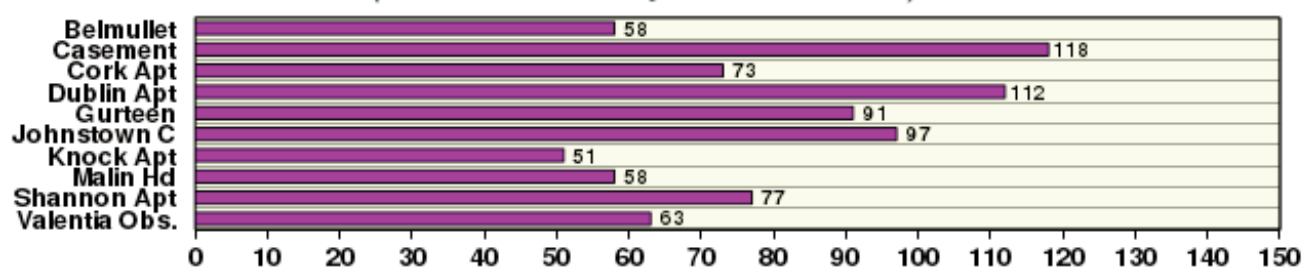
Rainfall (% of average for period 1981-2010) on whole month basis



Temperature (°C) difference from average for period 1981-2010



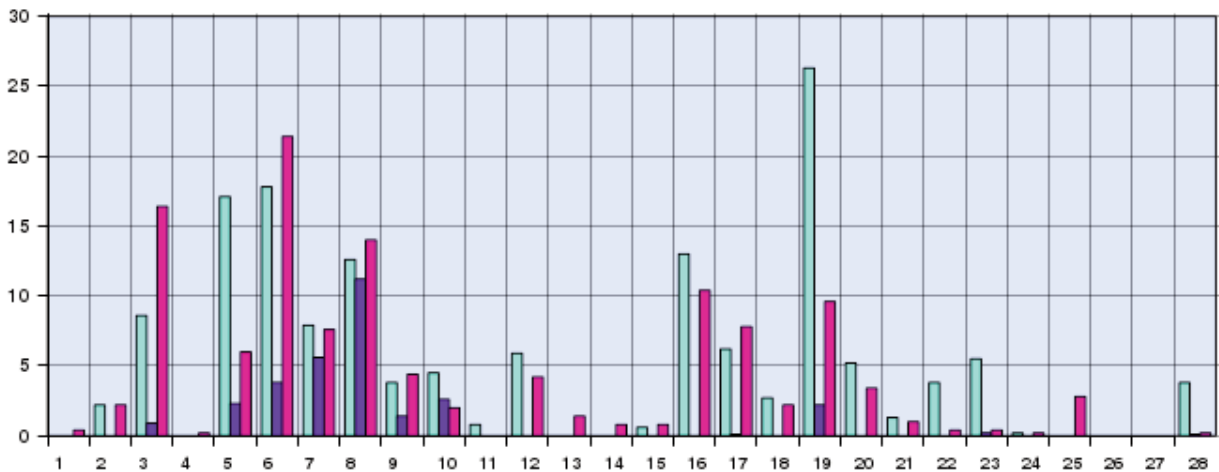
Sunshine (Number of monthly sunshine hours)



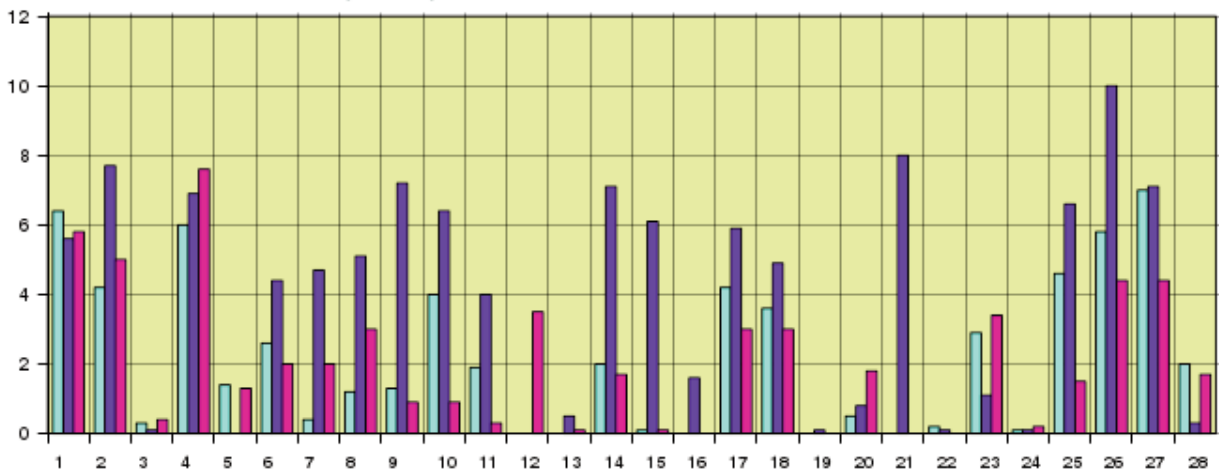
February 2019 Daily Values at selected synoptic stations

Based on data from 1- 28 February 2019 on a pro rata basis

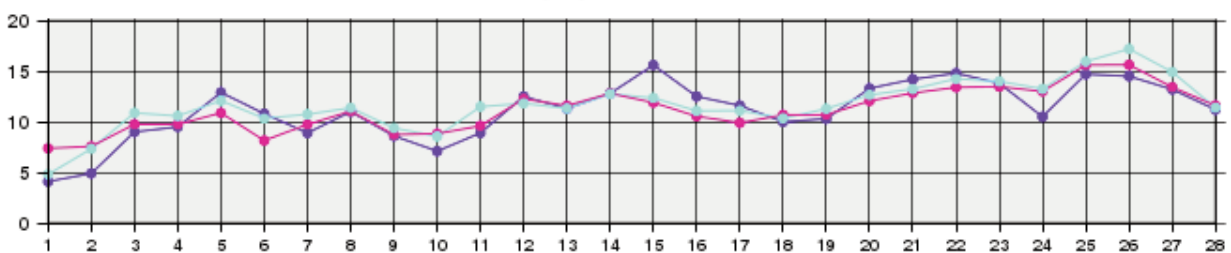
Daily 00-24h rainfall values(mm)



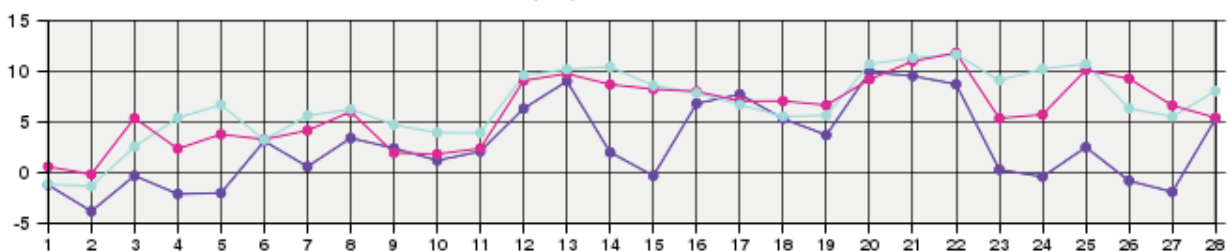
Daily sunshine values(hours)



Daily 00-24h maximum temperature (°C)



Daily 00-24h minimum temperature (°C)



- Valentia Observatory - Dublin Airport - Belmullet

Source: newR/WXBULL/CurrentMonthlyTemp.R Plotted Mon Mar 4 09:52:37 2019

Issued by the Climatology and Observations Division of Met Éireann on Monday March 4th 2019.

This report is based on available preliminary data from 25 principal weather stations operated by Met Éireann.

Synoptic station data is midnight to midnight UTC. Long-Term Averages (LTAs) and "average" refer to the period 1981-2010.

¹ 'Dry spell' is a period of 15 or more consecutive days to none of which is credited 1.0 mm or more of precipitation (i.e. daily tot < 1.0 mm).

² A wet day is a day with 1.0 mm or more of rainfall. ³ A dull day is a day with less than 0.5 hours of sunshine.

⁴ A very wet day is a day with 10.0 mm or more of rainfall.

*Sunshine data is from the Autosol Network. LTAs for these sites are currently not used for comparison purposes.

For more information, contact Met Éireann at 01-8064200 or e-mail: enq@met.ie