



Jan 2019

Mild and dry mostly, cold finish.

The dry and settled weather from the end of December continued into January. Most of the first two weeks saw high pressure centred over Ireland in a slack airflow. Some weak weather fronts traversed the country from time to time giving patchy rain and drizzle but it stayed predominantly dry. It was dull and mostly cloudy with only short sunny intervals. It stayed relatively mild with very little frost due to the cloud cover. Towards the end of the second week and for much of the third week, the high pressure moved southwards away from Ireland and was replaced by a westerly airflow. Low pressure systems moved to the north of Ireland and their associated weather fronts traversed the country bringing bands of rain or showers, as the air masses alternated between tropical maritime and polar maritime. Rainfall amounts stayed relatively low. There were a few cold and frosty nights on the 20th and 21st and again towards the end of the month as a polar maritime air mass in a north-westerly airflow started dominating after the 26th. The month finished cold with wintry precipitation at times and snow lying in places, especially in the West and North.

Rainfall: Below average at all stations

All monthly rainfall totals across the country were below their Long-Term Average (LTA). Percentage of monthly rainfall values ranged from 38% (monthly rainfall total of 30.9 mm) at Carlow (Oak Park) to 88% (the month's highest monthly rainfall total of 146.8 mm) at Newport, Co Mayo. Monthly rainfall totals for the month were lowest at Dublin Airport with 26.8 mm (43% of LTA). The highest daily rainfall total was 21.5 mm at Valentia Observatory, Co Kerry on the 31st. The number of rain days ranged from 12 days at Johnstown Castle, Co Wexford to 28 days at a few stations. The number of wet days¹ ranged from 6 days at Carlow (Oak Park) to 23 days at both Newport, Co Mayo and Valentia Observatory, Co Kerry. The number of very wet days³ ranged from zero days at a few stations to 4 days at Newport, Co Mayo.

Temperature: Nearly all monthly mean temperatures were above average

Nearly all mean air temperatures were above their Long-Term Average (LTA) for the month. Deviations from mean air temperature for the month ranged from -0.2 °C (5.1 °C mean temperature) at Dublin Airport to 1.0 °C at various stations. Mean temperatures for the month ranged from 5.0 °C (1.0 °C above LTA) at Knock Airport, Co Mayo to 8.5 °C (1.0 °C above LTA) at Sherkin Island, Co Cork. The month's highest temperature was reported at Finner, Co Donegal on the 7th with a temperature of 13.3 °C. Both the month's lowest air and grass minimum temperature were recorded on the 31st at Dublin Airport. The lowest air minimum was -5.8 °C while the lowest grass minimum was -10.2 °C (*its lowest January grass min since 2013*). All stations reported ground frost during the month. The number of days with ground frost ranged from 3 days at Mace Head, Co Galway to 16 days at a few stations. More than half of stations reported air frost. The number of days with air frost ranged from zero days at Mace Head, Co Galway to 10 days at both Ballyhaise, Co Cavan and Dunsany, Co Meath.

Sunshine: Below average almost everywhere

Most available monthly sunshine totals were below their Long-Term Average (LTA). Percentage of monthly sunshine values ranged from 39% (the month's lowest monthly sunshine total of 18.2 hours) at Knock Airport, Co Mayo to 102 % (the month's highest monthly sunshine total of 56.9 hours) at Johnstown Castle*, Co Wexford. The highest number of daily sunshine hours recorded this month was 7.8 hours at Gurteen*, Co Tipperary on the 30th Jan. The number of dull days² ranged from 13 days at Cork Airport to 22 days at Knock Airport, Co Mayo.

Wind: Windier second half of the month

Monthly mean wind speeds ranged from 5.2 knots (9.6 km/h) at Mullingar, Co Westmeath to 15.3 knots (28.3 km/h) at Malin Head, Co Donegal. Gales were reported on the 16th, 17th, 21st and 22nd with strong gales reported on the 27th, reaching storm force on the 26th. The number of days with strong gales was 2 days at both Roche's Point, Co Cork and Malin Head, Co Donegal. The number of days with storm force winds was 1 day at Malin Head, Co Donegal. Both the month's highest gust and 10-minute mean wind speed were reported on the 26th. The highest gust was 67 knots (124 km/h) reported at Mace Head, Co Galway while the month's highest 10-minute mean wind speed was 51 knots (95 km/h) at Malin Head, Co Donegal.

EXTREME VALUES AT SYNOPTIC STATIONS

Rainfall

Highest total: 146.8 mm (88% of LTA) at Newport, Co Mayo
Lowest total: 26.8 mm (43% of LTA) at Dublin Airport, Co Dublin
Highest daily rainfall: 21.5 mm at Valentia Observatory, Co Kerry on the 31st

Temperature

Highest mean monthly temperature: 8.5°C at Sherkin Island, Co Cork (1.0°C above LTA)
Lowest mean monthly temperature: 5.0°C at Knock Airport, Co Mayo (1.0°C above LTA)
Highest Air temperature: 13.3°C at Finner, Co Donegal on the 7th
Lowest air temperature: -5.8°C at Dublin Airport, Co Dublin on the 31st
Lowest grass minimum: -10.2°C at Dublin Airport, Co Dublin on the 31st (*its lowest January grass min since 2013*)

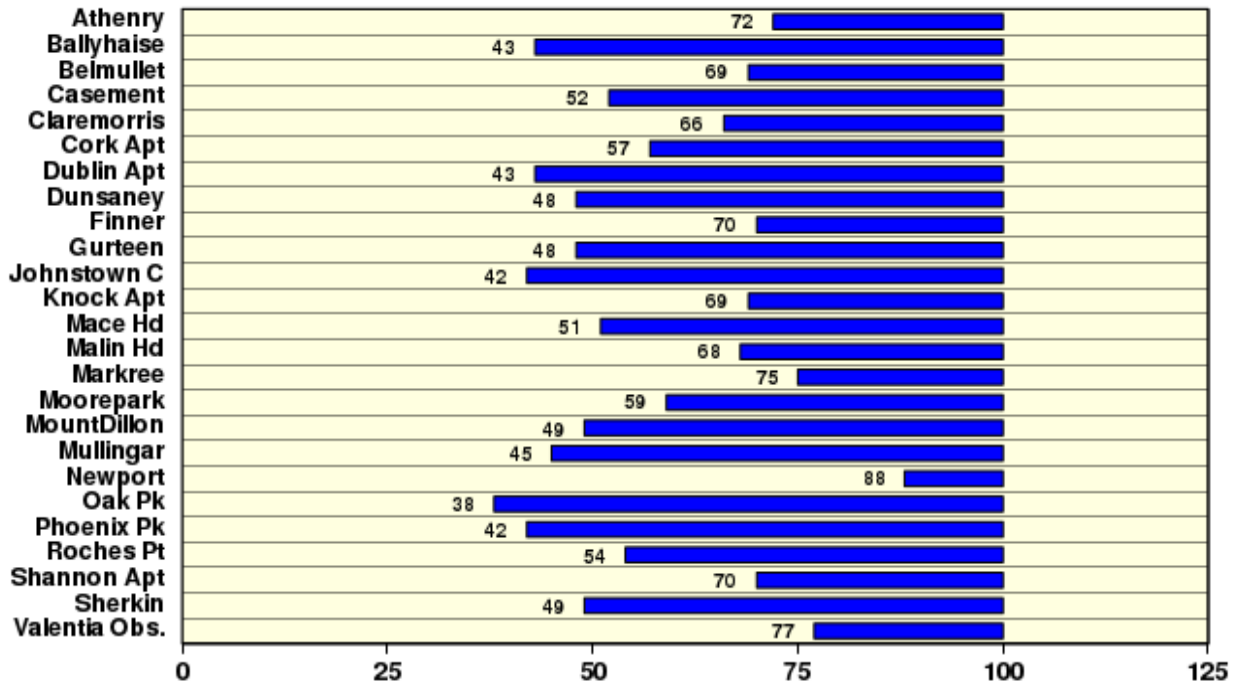
Sunshine

Highest monthly total: 56.9 hrs (daily mean 1.84 hrs/day) at Johnstown Castle*, Co Wexford
Lowest monthly total: 18.2 hrs (daily mean 0.6 hrs/day) at Knock Airport, Co Mayo (*its dullest January on record, length 22 years*)
Highest daily sunshine: 7.8 hrs at Gurteen*, Co Tipperary* on the 30th

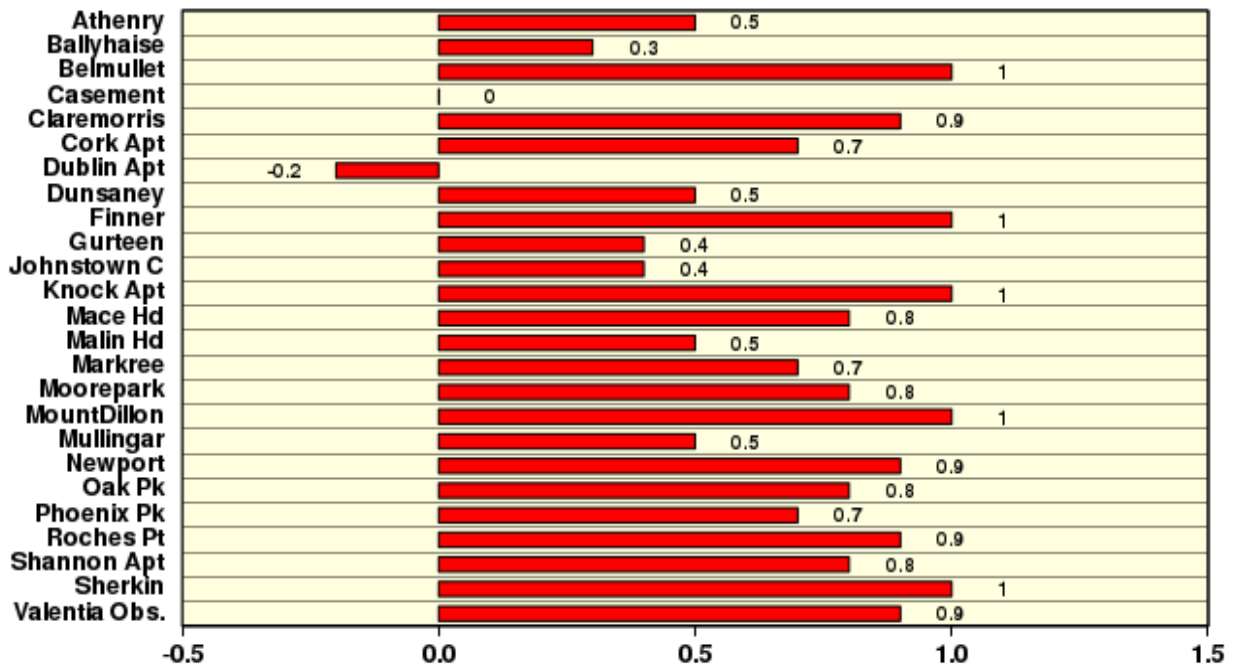
January 2019

Based on Data from 1-31 January 2019 on whole month basis

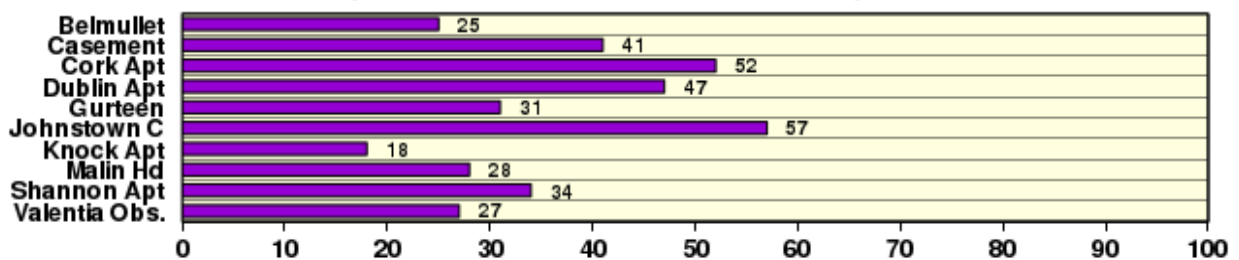
Rainfall (% of average for period 1981-2010) on whole month basis



Temperature (°C) (difference from average for period 1981-2010)



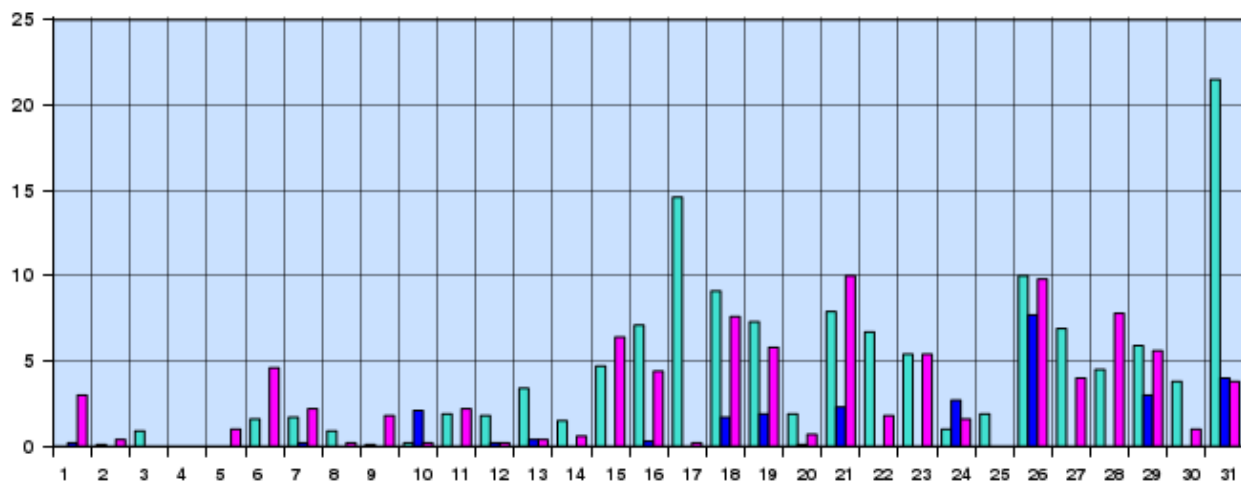
Sunshine (Number of monthly sunshine hours)



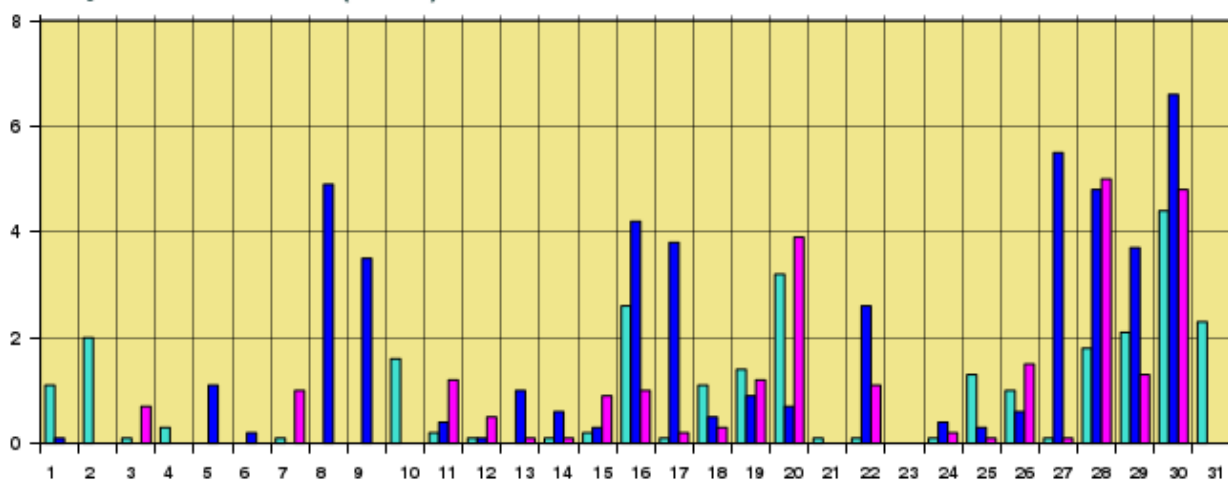
January 2019 Daily Values at selected synoptic stations

Based on data from 1-31 January 2019 on a pro rata basis

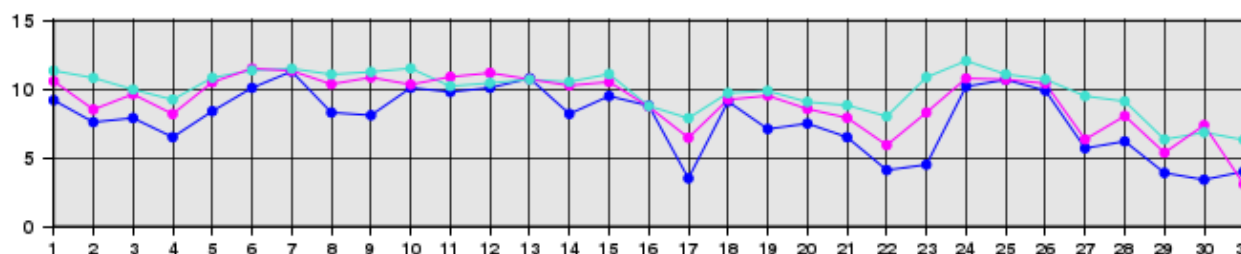
Daily 00-24h rainfall values(mm)



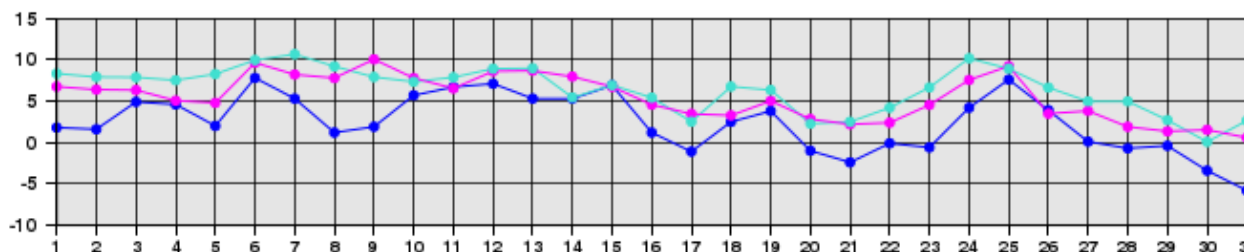
Daily sunshine values(hours)



Daily 00-24h maximum temperature (°C)



Daily 00-24h minimum temperature (°C)



- Valentia Observatory - Dublin Airport - Belmullet

Source: newR/WXBULL/CurrentMonthlyTemp.R Plotted Fri Feb 1 12:21:52 2019

Issued by the Climatology and Observations Division of Met Éireann on Monday February 4th 2019. This report is based on available preliminary data from 25 principal weather stations operated by Met Éireann. Synoptic station data is midnight to midnight UTC. Long-Term Averages (LTAs) and "average" refer to the period 1981-2010. 'Dry spell' is a period of 15 or more consecutive days to none of which is credited 1.0 mm or more of precipitation (i.e. daily tot < 1.0 mm). ¹A wet day is a day with 1.0 mm or more of rainfall. ²A dull day is a day with less than 0.5 hours of sunshine. ³A very wet day is a day with 10.0 mm or more of rainfall. *Sunshine data is from the Autosol Network. LTAs for these sites are currently not used for comparison purposes. For more information, contact Met Éireann at 01-8064200 or e-mail: enq@met.ie