



NOV 2018

Dull and wet in the south and east

After a chilly start, much of the first three weeks of November were relatively mild. Low pressure centred to the northwest of Ireland was a constant feature between the 3rd and 15th. An active North Atlantic jet stream fed weather fronts and troughs up over Ireland from the south and southwest, sometimes stalling over the east of the country as they pushed against a blocking high-pressure system over Northern Europe. This gave rain or showers on most days with heavy widespread rain and strong winds on the 9th. After the 15th, the blocking high pressure system over Northern Europe began to move westwards over Scandinavia pushing the Atlantic weather fronts away from Ireland. This introduced a progressively cooler, drier southeasterly then easterly airflow over Ireland up to the 19th. The easterly flow became more unstable after the 19th, with showers or longer spells of heavy rain or hail principally to the east and south. From the 27th to the end of the month, the Atlantic influence returned with a succession of weather fronts and active low pressure systems, including Storm Diana on the 28th, traversing the country bringing heavy rain or showers and gales at times.

Rainfall: Above average in most places

The majority of monthly rainfall totals were above their Long-Term Average (LTA). Percentage of monthly rainfall values ranged from 69% (monthly rainfall total of 88.9 mm) at Finner, Co Donegal to 211% (monthly rainfall total of 200.0 mm) at Roche's Point, Co Cork. Monthly rainfall totals ranged from 86.3 mm (71% of LTA) at Athenry, Co Galway to 253.4 mm (149% of LTA) at Valentia Observatory, Co Kerry. The month's wettest day was also recorded at Valentia Observatory, Co Kerry with 34.1 mm on the 27th. The number of rain days ranged from 19 days at Finner, Co Donegal to 28 days at Cork Airport. The number of wet days¹ ranged from 14 days at Mount Dillon, Co Roscommon to 23 days at both Roche's Point, Co Cork and Cork Airport. The number of very wet days³ ranged from 1 day at Mullingar, Co Westmeath to 12 days at Johnstown Castle, Co Wexford.

Temperature: Most monthly mean temperatures were above average

Nearly all mean air temperatures were above their Long-Term Average (LTA) for the month. Deviations from mean air temperature for the month ranged from -0.1 °C at 3 stations with various mean temperatures to 1.4 °C (8.5 °C mean temperature) at Dublin (Phoenix Park). Mean temperatures for the month ranged from 6.5 °C (0.3 °C above LTA) at Knock Airport, Co Mayo to 10.0 °C (0.5 °C above LTA) at Sherkin Island, Co Cork. The month's highest air temperature was reported at Shannon Airport, Co Clare on the 3rd with a temperature of 16.3 °C (its highest November temperature since 2007). The lowest air temperature was reported on the 2nd at Mount Dillon, Co Roscommon with -5.0 °C (its lowest November min since 2010). The lowest grass minimum was -8.6 °C, reported at both Oak Park, Co Carlow and Mount Dillon, Co Roscommon on the 2nd. All stations reported ground frost during the month. The number of days with ground frost ranged from 2 days at both Sherkin Island, Co Cork and Newport, Co Mayo to 19 days at Mount Dillon, Co Roscommon. More than half of stations reported air frost. The number of days with air frost ranged from zero days at a few stations to 8 days at Mount Dillon, Co Roscommon.

Sunshine: Above average in the north and west, below average in the south and east

Sunshine values were variable across the country. Percentage of monthly sunshine values ranged from 64% (the month's lowest monthly sunshine total of 44.9 hours) at Cork Airport to 122% (monthly sunshine total of 61.9 hours) at Knock Airport, Co Mayo. Monthly sunshine totals were as much as 85.2 hours (No LTA comparison*) at Belmullet, Co Mayo. The highest number of daily sunshine hours recorded this month was 8.7 hours at Casement Aerodrome, Co Dublin on the 1st. The number of dull days² ranged from 5 days at Belmullet, Co Mayo to 16 days at Cork Airport.

Wind: Storm Diana brought strong gales to the South and West

Monthly mean wind speeds ranged from 6.9 knots (12.8 km/h) at Fermoy (Moore Park), Co Cork to 17.6 knots (32.6 km/h) at Mace Head, Co Galway. Gales were reported on 5 days or more during the month with strong gale winds reported on the 9th, 27th and 28th. The number of days with gales ranged from zero days at Dublin (Phoenix Park) to 6 days at both Mace Head, Co Galway and Malin Head, Co Donegal. The number of days with strong gales ranged from zero days at most stations to 3 days at Sherkin Island, Co Cork. Both the month's highest gust and 10-minute mean wind speed were reported at Sherkin Island, Co Cork on the 28th due to storm Diana. The highest gust was 66 knots (122 km/h) while the month's highest 10-minute mean wind speed was 47 knots (87 km/h). Both Casement Aerodrome, Co Dublin and Roche's Point, Co Cork recorded a gust of 62 knots (115 km/h) on the 28th also due to storm Diana. This was the highest November gust recorded at Casement for 27 years and the highest November gust at Roche's Point for 13 years.

EXTREME VALUES AT SYNOPTIC STATIONS

Rainfall

Highest total: 253.4 mm (149% of LTA) at Valentia Observatory, Co Kerry
Lowest total: 86.3 mm (71% of LTA) at Athenry, Co Galway
Highest daily rainfall: 34.1 mm at Valentia Observatory, Co Kerry on the 27th

Temperature

Highest mean monthly temperature: 10.0°C at Sherkin Island, Co Cork (0.5°C above LTA)
Lowest mean monthly temperature: 6.5°C at Knock Airport, Co Mayo (0.3°C above LTA)
Highest Air temperature: 16.3°C at Shannon Airport, Co Clare on the 3rd (*its highest November temperature since 2007*)
Lowest air temperature: -5.0°C at Mount Dillon, Co Roscommon on the 2nd (*its lowest November min since 2010*)
Lowest grass minimum: -8.6°C at Mount Dillon, Co Roscommon on the 2nd and Oak Park, Co Carlow on the 2nd

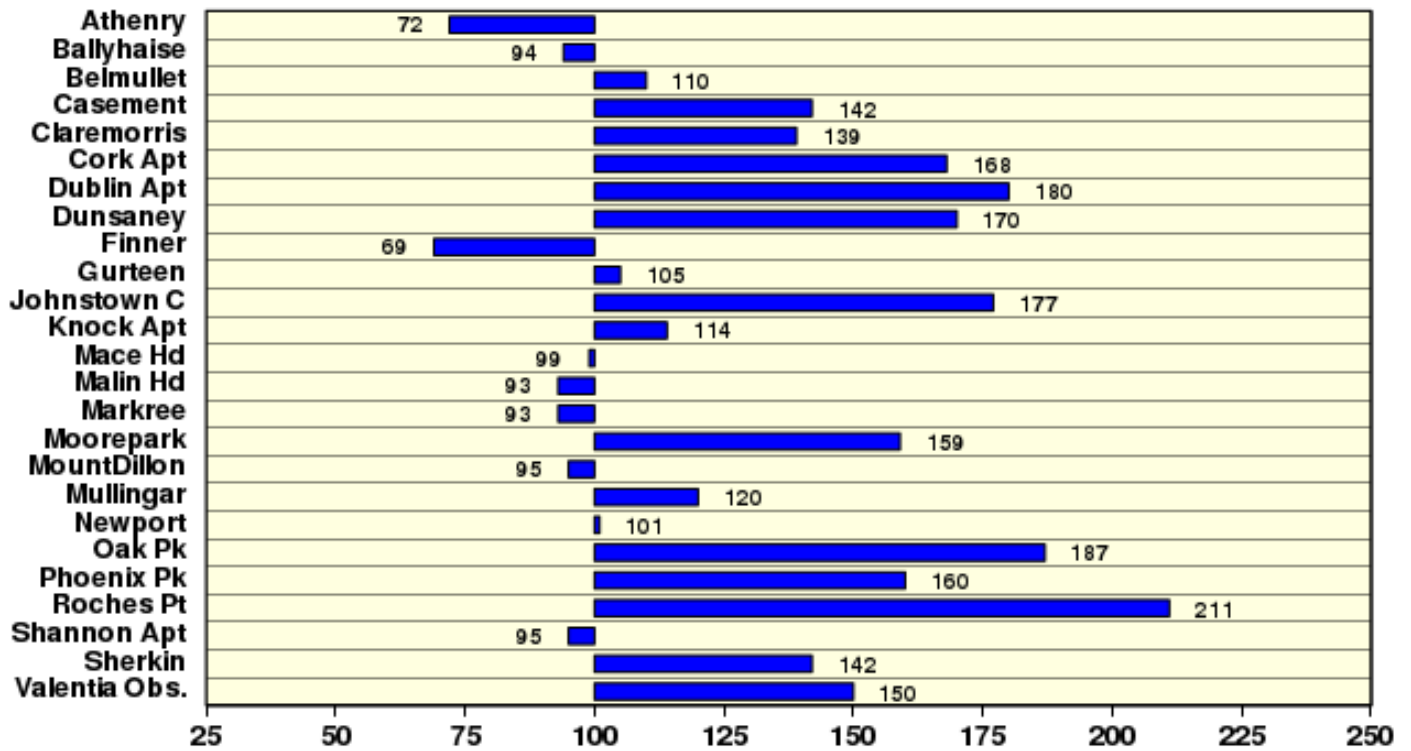
Sunshine

Highest monthly total: 85.2 hrs (daily mean 2.84 hrs/day) at Belmullet*, Co Mayo
Lowest monthly total: 44.9 hrs (daily mean 1.50 hrs/day) at Cork Airport, Co Cork (*its dulllest November since 1994*)
Highest daily sunshine: 8.7 hrs at Casement Aerodrome, Co Dublin on the 1st

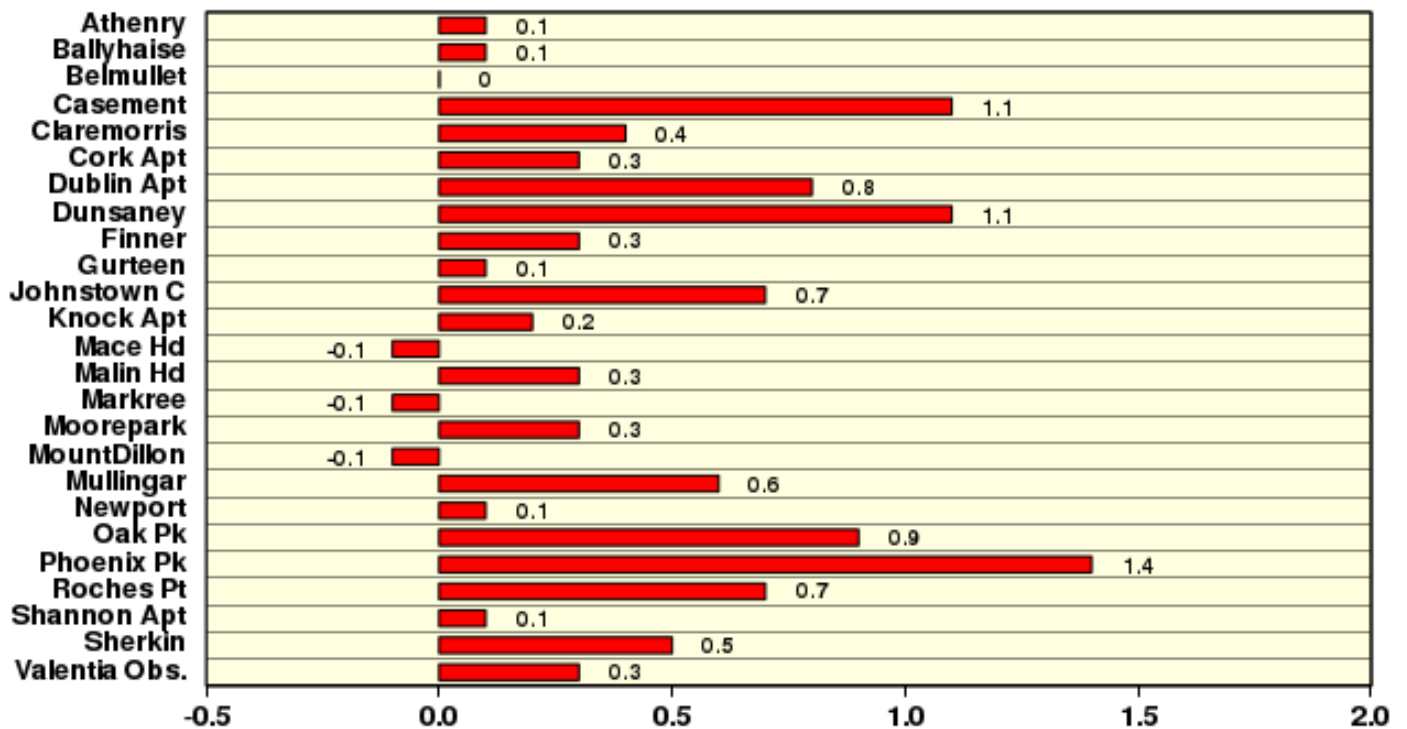
November 2018

Based on Data from 1-30 November 2018 on whole month basis

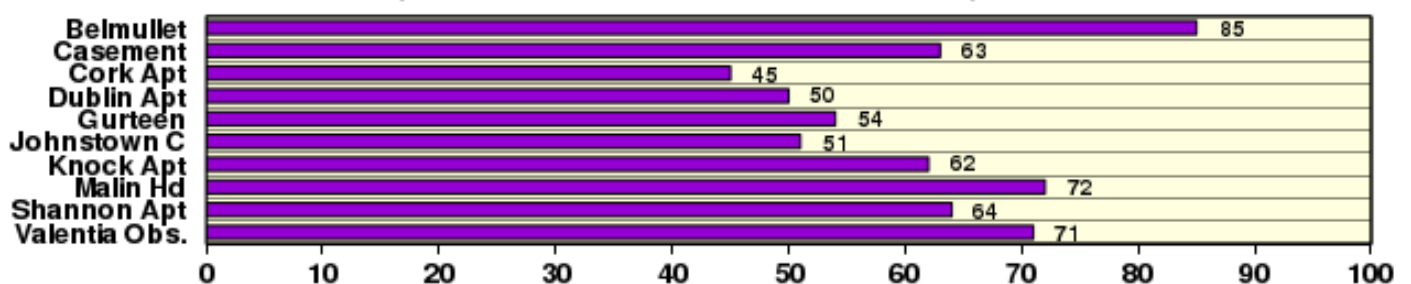
Rainfall (% of average for period 1981-2010) on whole month basis



Temperature (°C) (difference from average for period 1981-2010)



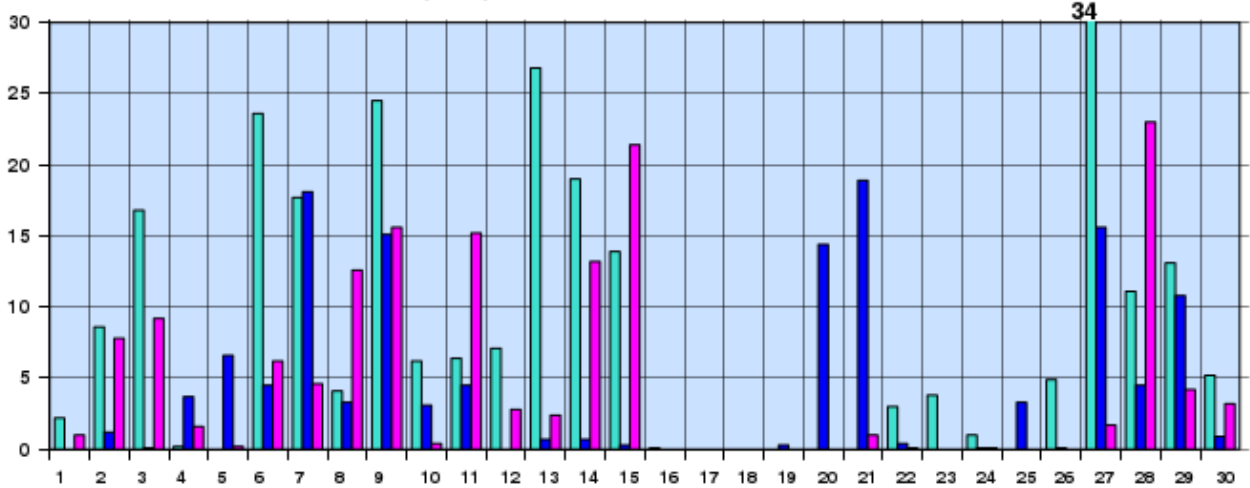
Sunshine (Number of monthly sunshine hours)



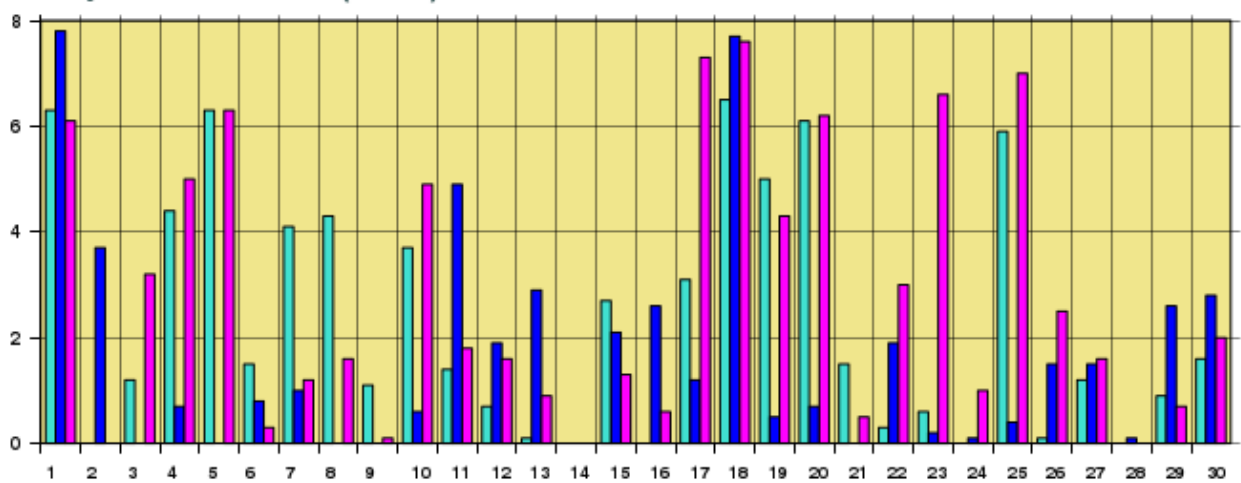
November 2018 Daily Values at selected synoptic stations

Based on data from 1-30 November 2018 on a pro rata basis

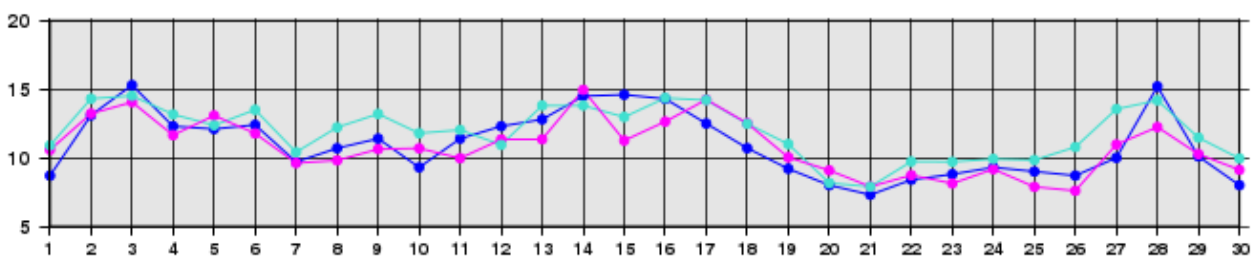
Daily 00-24h rainfall values(mm)



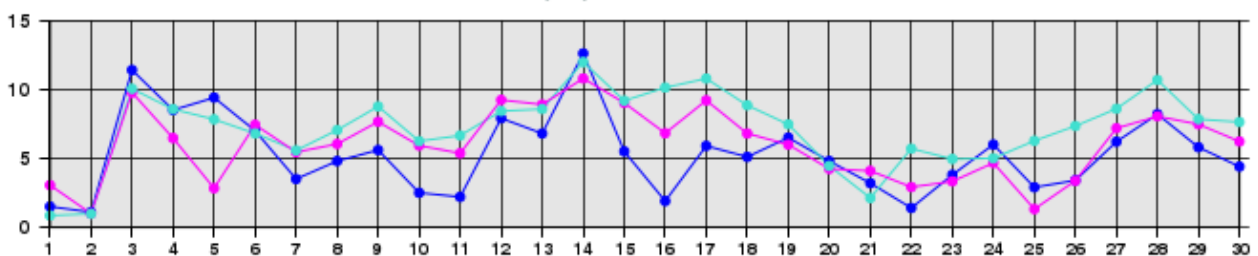
Daily sunshine values(hours)



Daily 00-24h maximum temperature (°C)



Daily 00-24h minimum temperature (°C)



- Valentia Observatory - Dublin Airport - Belmullet

Source: newR/WXBULL/Current MonthlyTemp.R Plotted Tue Dec 4 10:20:05 2018

Issued by the Climatology and Observations Division of Met Éireann on Tuesday December 4th 2018. This report is based on available preliminary data from 25 principal weather stations operated by Met Éireann. Synoptic station data is midnight to midnight UTC. Long-Term Averages (LTAs) and "average" refer to the period 1981-2010. ¹ 'Dry spell' is a period of 15 or more consecutive days to none of which is credited 1.0 mm or more of precipitation (i.e. daily tot < 1.0 mm). ² A wet day is a day with 1.0 mm or more of rainfall. ³ A dull day is a day with less than 0.5 hours of sunshine. ⁴ A very wet day is a day with 10.0 mm or more of rainfall. *Sunshine data is from the Autosol Network. LTAs for these sites are currently not used for comparison purposes. For more information, contact Met Éireann at 01-8064200 or e-mail: enq@met.ie