



JUNE 2018

Heatwave conditions experienced in many places in a mostly dry and sunny month.

There were intense thunderstorms especially on the 1st and 8th, but in general the dry, settled weather from the end of May continued for the first two weeks of June with high pressure in charge and a slack easterly flow. The north Atlantic jet stream stayed well to the north. There was a break in the fine weather for the third week of the month. Storm Hector passed close to the Northwest, giving two days of rain and gales on the 13th and 14th followed by frontal systems crossing the country from the west up to the 20th. Even during this unsettled spell, rainfall totals were very low especially in the South and East. From the 21st, the remainder of the month was settled and exceptionally dry due to an area of high pressure building over Ireland. Heat wave and partial drought conditions were reported in several locations.

Rainfall: Driest June at Dublin (Phoenix Park) since 1941

Apart from Mount Dillon, all rainfall totals were below their Long-Term Average (LTA) for the month. Percentage of monthly rainfall values ranged from 5% (the month's lowest monthly rainfall total of 3.8 mm) at Dublin, Phoenix Park (its driest June since 1941) to 111 % (the month's highest monthly rainfall total of 82.2 mm) at Mount Dillon, Co Roscommon. The highest daily rainfall total was 33.2 mm at Newport, Co Mayo on the 19th. The number of rain days ranged from 4 days at Dublin (Phoenix Park) to 11 days at a few stations. The number of wet days¹ ranged from 1 day at Dublin (Phoenix Park) to 9 days at both Ballyhaise, Co Cavan and Mount Dillon, Co Roscommon. The number of very wet days³ ranged from zero days at a few stations to 3 days at Mount Dillon, Co Roscommon. An absolute drought occurred at Belmullet earlier in the month. Partial droughts were still being recorded at Dublin Airport, Phoenix Park and Oak Park up to the end of the month. There were a large number of lightning strikes observed on the 1st and the 8th.

Temperature: Highest maximum temperature since 1946 at Shannon Airport

All mean air temperatures across the country were above their Long-Term Average (LTA) for the month. Deviations from mean air temperature for the month ranged from 0.9 °C (mean temperature 13.5 °C) at Malin Head, Co Donegal to 2.8 °C (15.0 °C mean temperature) at Knock Airport, Co Mayo. Mean temperatures ranged from 13.5 °C at Malin Head to 17.0 °C (2.5 °C above LTA) at Shannon Airport, Co Clare (its warmest June since 1946). The month's lowest temperatures were recorded on the 22nd with the lowest air minimum reported at Mount Dillon, Co Roscommon with a temperature of 2.1 °C and the lowest grass minimum reported at Dunsany, Co Meath with -1.2 °C. The highest maximum temperature was reported on the 28th at Shannon Airport, Co Clare with a temperature of 32.0 °C (its highest daily maximum temperature, of any month, since 1946). There was no air frost reported this month. The number of days with ground frost ranged from zero days at two thirds of stations to 1 day at one third of stations.

Sunshine: All stations had above average Sunshine

Percentage of monthly sunshine values ranged from 139% (monthly sunshine total of 200.6 hours) at Knock Airport, Co Mayo to 160% (monthly sunshine total of 256.6 hours) at Casement Aerodrome, Co Dublin. Monthly sunshine totals were highest at Johnstown Castle*, Co Wexford with 279.9 hours (No LTA comparison). Monthly sunshine totals were lowest at Malin Head, Co Donegal with 199.3 hours (No LTA comparison). The highest number of daily sunshine hours recorded this month was 16.5 hours at Malin Head, Co Donegal on the 28th. The number of dull days² ranged from zero days at Dublin Airport and Johnstown Castle to 7 days at both Malin Head, Co Donegal and Valentia Observatory, Co Kerry. Dense fog (visibility $\leq 40\text{m}$) at Knock Airport, Co Mayo, was reported on the 5th.

Wind: Storm Hector brought storm force winds mid-month

Monthly mean wind speeds ranged from 4.5 knots (8.3 km/h) at Ballyhaise, Co Cavan to 10.0 knots (18.5 km/h) at Mace Head, Co Galway. Strong gales were reported on the 13th and storm force winds were reported on the 14th. The number of days with strong gales ranged from zero days at a few stations to 2 days at Belmullet, Co Mayo. There was 1 day with storm force winds at Mace Head, Co Galway. Both the month's highest gust and 10-minute mean wind speed were reported at Mace Head, Co Galway on the 14th. The highest gust was 61 knots (113 km/h), its highest June gust since 2005. The month's highest 10-minute mean wind speed was 48 knots (89 km/h), its highest June 10-minute wind speed since 2005.

EXTREME VALUES AT SYNOPTIC STATIONS

Rainfall

Highest total: 82.2 mm (110% of LTA) at Mount Dillon, Co Roscommon
Lowest total: 3.8 mm (5% of LTA) at Dublin (Phoenix Park) (*its driest June since 1941*)
Highest daily rainfall: 33.2 mm at Newport, Co Mayo on the 19th

Temperature

Highest mean monthly temperature: 17.0°C at Shannon Airport, Co Clare (2.5°C above LTA) (*its warmest June since 1946*)
Lowest mean monthly temperature: 13.5°C at Malin Head, Co Donegal (0.9 °C above LTA)
Highest air temperature: 32.0°C at Shannon Airport, Co Clare on the 28th (*its highest daily max temp, of any month, since 1946*)
Lowest air temperature: 2.1°C at Mount Dillon, Co Roscommon on the 22nd
Lowest grass minimum: -1.2°C at Dunsany, Co Meath on the 22nd

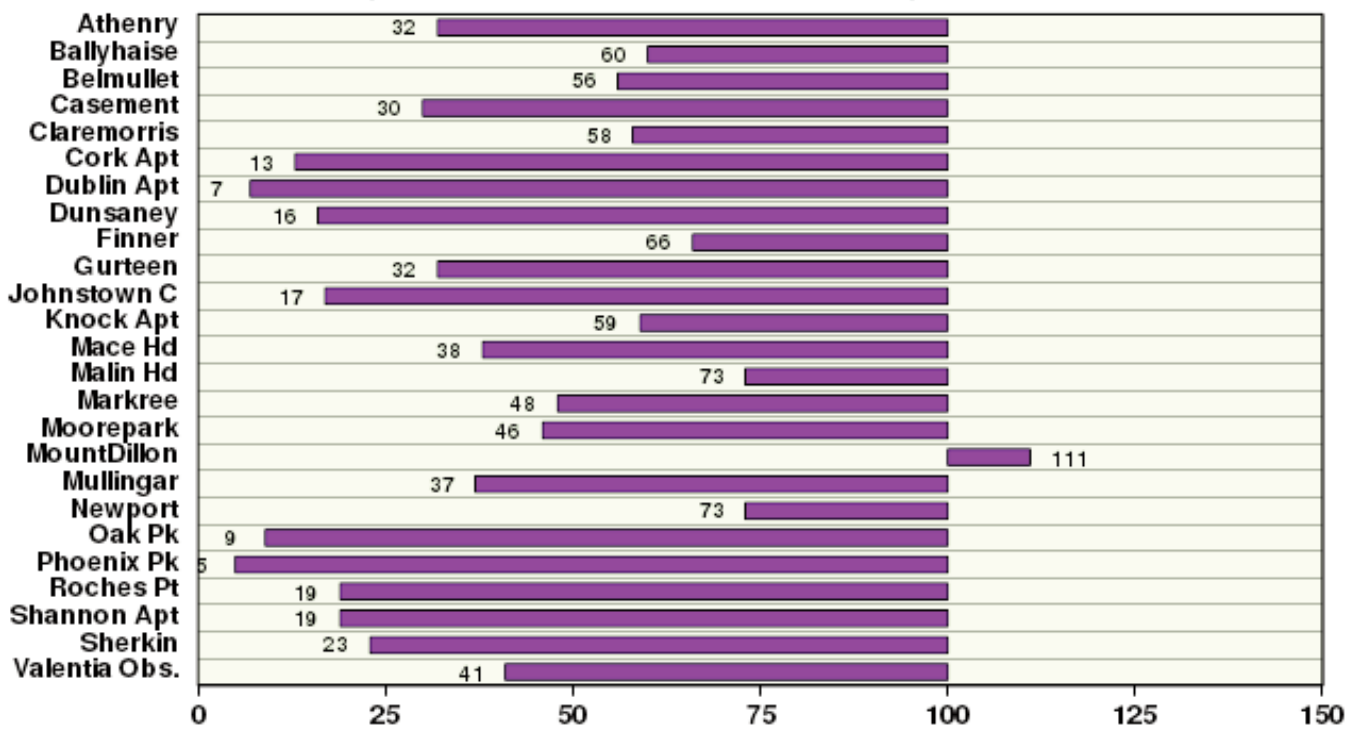
Sunshine

Highest monthly total: 299.9 hrs (daily mean 10.0 hrs/day) at Johnstown Castle*, Co Wexford
Lowest monthly total: 199.3 hrs (daily mean 6.6 hrs/day) at Malin Head*, Co Donegal
Highest daily sunshine: 16.5 hrs at Malin Head*, Co Donegal on the 28th

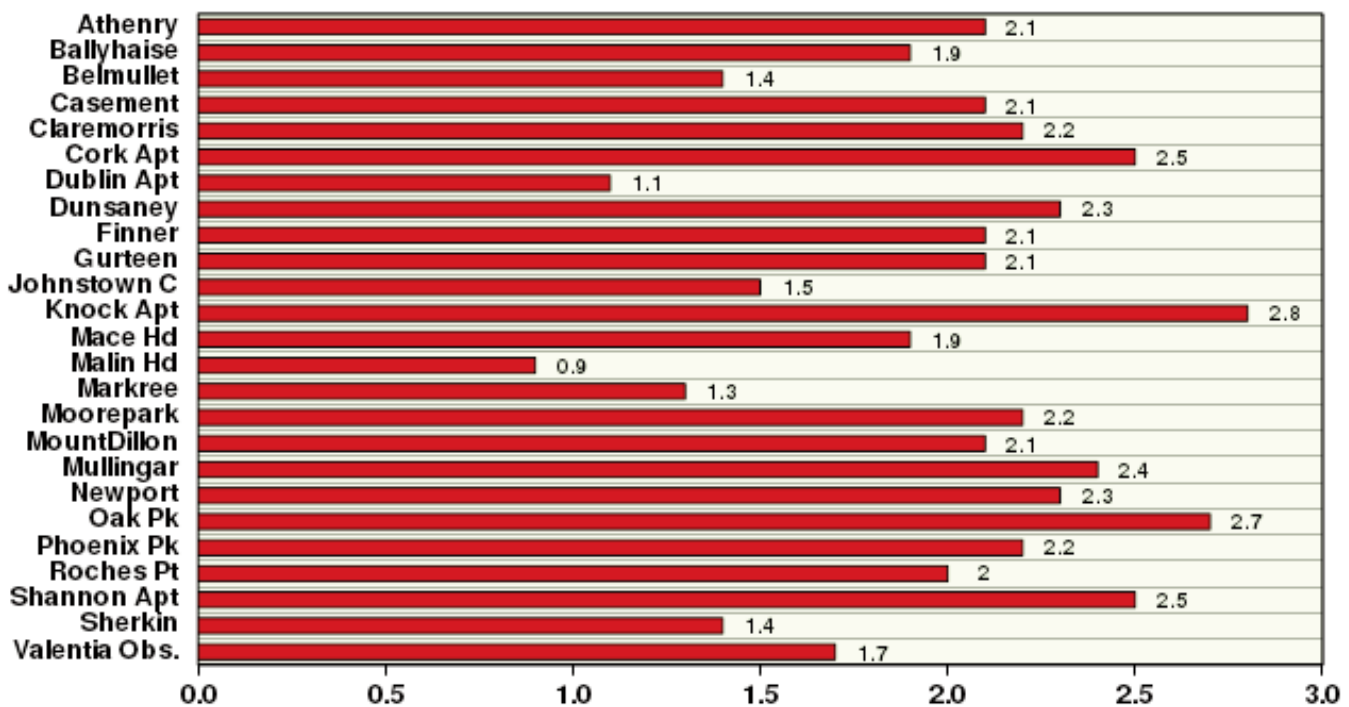
June 2018

Based on Data from 1- 30 June 2018 on whole month basis

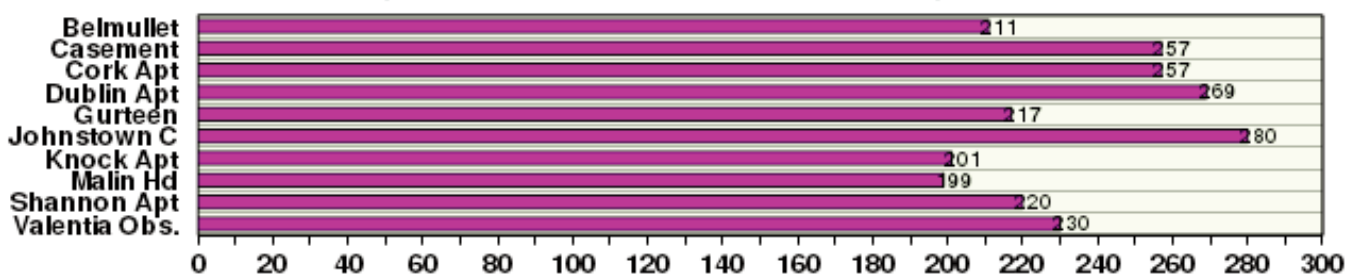
Rainfall (% of average for period 1981-2010) on whole month basis



Temperature (°C) (difference from average for period 1981-2010)



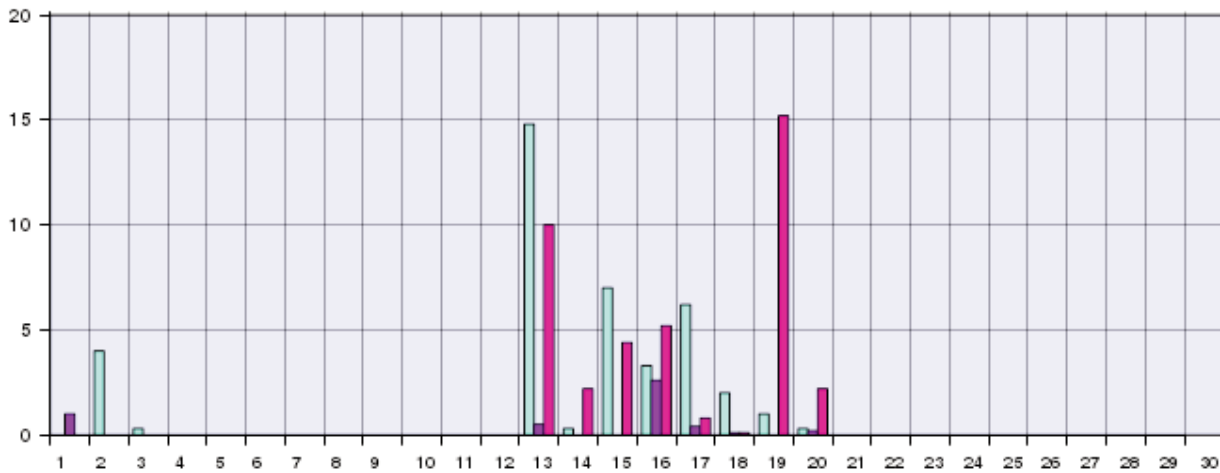
Sunshine (Number of monthly sunshine hours)



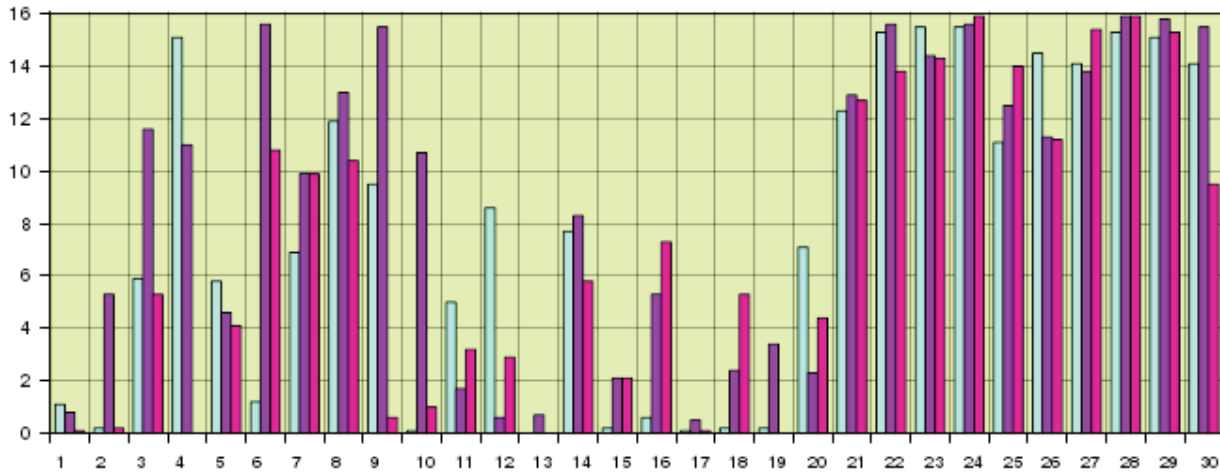
June 2018 Daily Values at selected synoptic stations

Based on data from 1-30 June 2018 on a pro rata basis

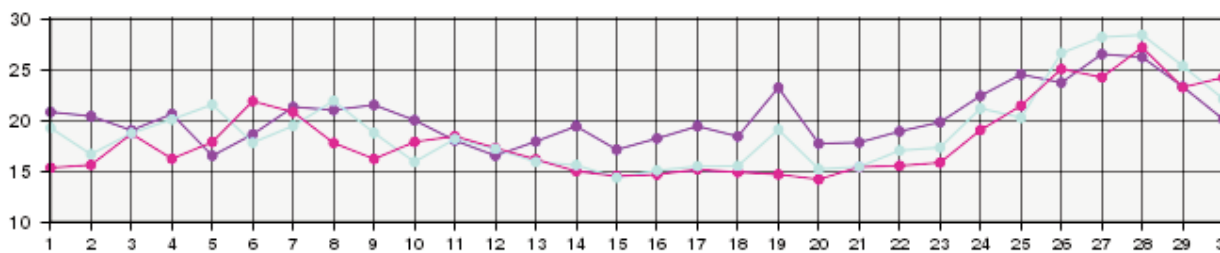
Daily 00-24h rainfall values(mm)



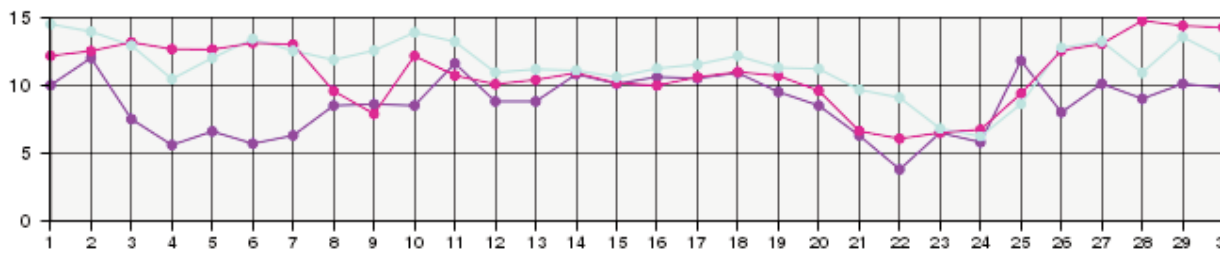
Daily sunshine values(hours)



Daily 00-24h maximum temperature (°C)



Daily 00-24h minimum temperature (°C)



- Valentia Observatory - Dublin Airport - Belmullet

Source: newR/WXBULL/CurrentMonthlyTemp.R Plotted Tue Jul 3 11:14:44 2018

Issued by the Climatology and Observations Division of Met Éireann on Tuesday July 3rd 2018.

This report is based on available preliminary data from 25 principal weather stations operated by Met Éireann.

Synoptic station data is midnight to midnight UTC. Long-Term Averages (LTAs) and "average" refer to the period 1981-2010. 'Dry spell' is a period of 15 or more consecutive days to none of which is credited 1.0 mm or more of precipitation (i.e. daily tot < 1.0 mm).

¹ A wet day is a day with 1.0 mm or more of rainfall. ² A dull day is a day with less than 0.5 hours of sunshine.

³ A very wet day is a day with 10.0 mm or more of rainfall.

*Sunshine data is from the Autosol Network. LTAs for these sites are currently not used for comparison purposes. For more information, contact Met Éireann at 01-8064200 or e-mail: enq@met.ie